



# Auditing Continuity / Data Compilation (AC/DC) Scheme



MUNICIPAL WASTE ADVISORY COUNCIL  
*"Getting the Environment Right"*

Rebecca Brown  
MWAC, Executive Officer

14 March 2008





# Outline of Presentation

- Collection of Recycling Data in WA
- Overview of AC/DC Scheme
- AC/DC Scheme Period 2 - Outcomes
- Data Collection – Where to from here?





## Dirty Deeds Done Dirt Cheap – Collection of Recycling Data in WA

- 1998 - 2001 Municipal Recycling Scheme (MRS)
- 2001 - 2006 Resource Recovery Rebate Scheme (RRRS)
- 2006 - 2007 Auditing Continuity / Data Compilation (AC/DC) Scheme





# Back in Black - What is the AC/DC Scheme?

- Interim replacement for RRRS Scheme
- Covered two six month Periods from 1 July 2006 to 30 June 2007
- Funding structure based upon services provided





# AC/DC Scheme Data Collection

- Scheme application forms distributed to all Local Governments and Regional Councils in WA
- Commercial content removed from applications and data entered into spreadsheet
- Data quality assurance (through comparison with previous data provided)





# AC/DC Scheme Period 1 & 2

<b>AC/DC Period 1</b>	<b>AC/DC Period 2</b>
1 July to 31 December 2006	1 January to 30 June 2007
57 local governments applied	67 local governments applied
113,333t of material reused/recycled/recovered	134,931t of material reused/recycled/recovered
MWAC recommended: \$64,000 awarded to local governments	MWAC recommended: \$71,500 awarded to local government



# Thunderstruck – Impact of AC/DC Scheme



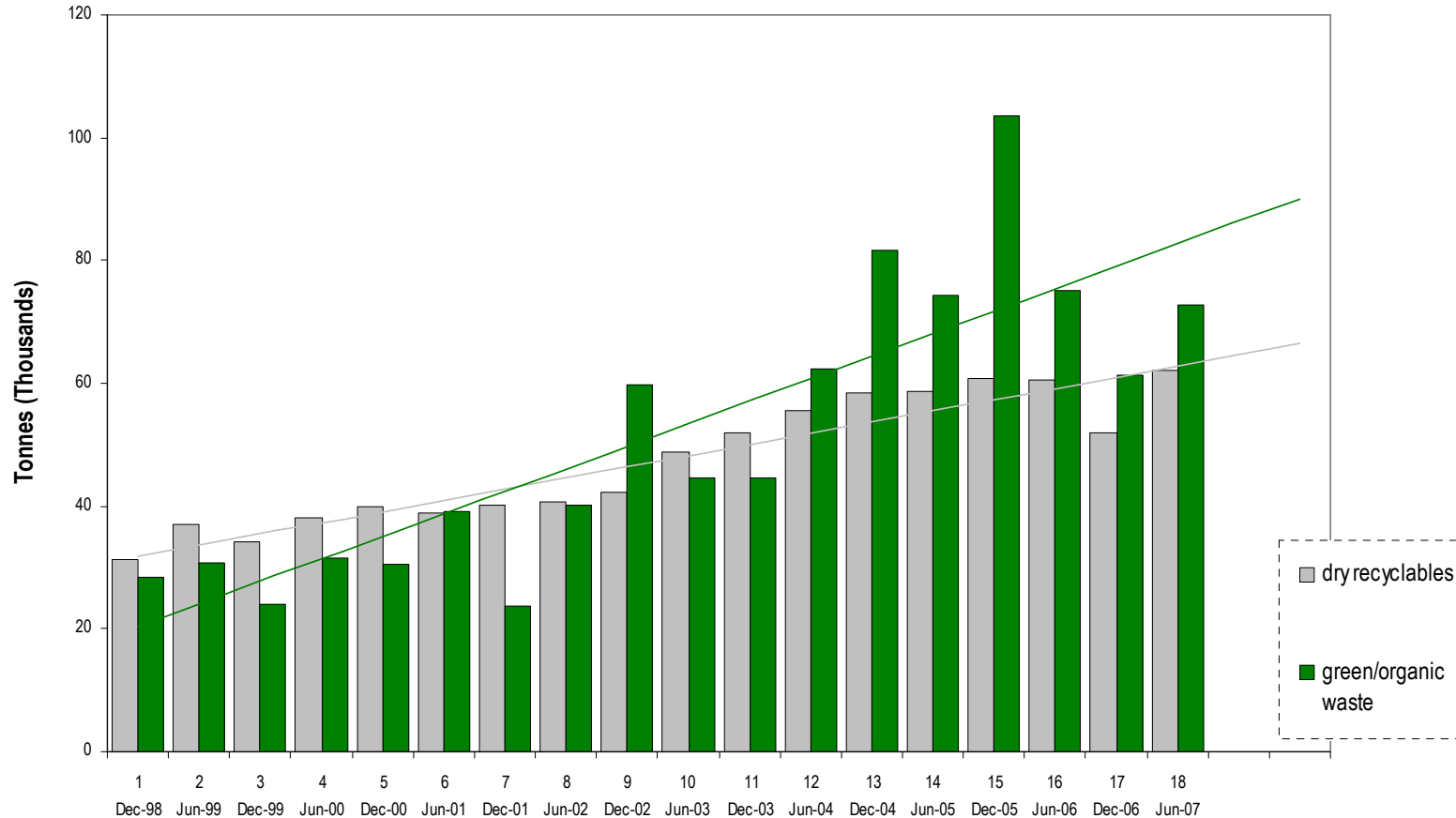
The equivalent volume of material, diverted from landfill during Period 2, would fill Allendale Square more than twice.





# Whole lot of Recovery – State-wide Graph

Time Series of Recovery of Dry Recyclables and Green/Organic Waste

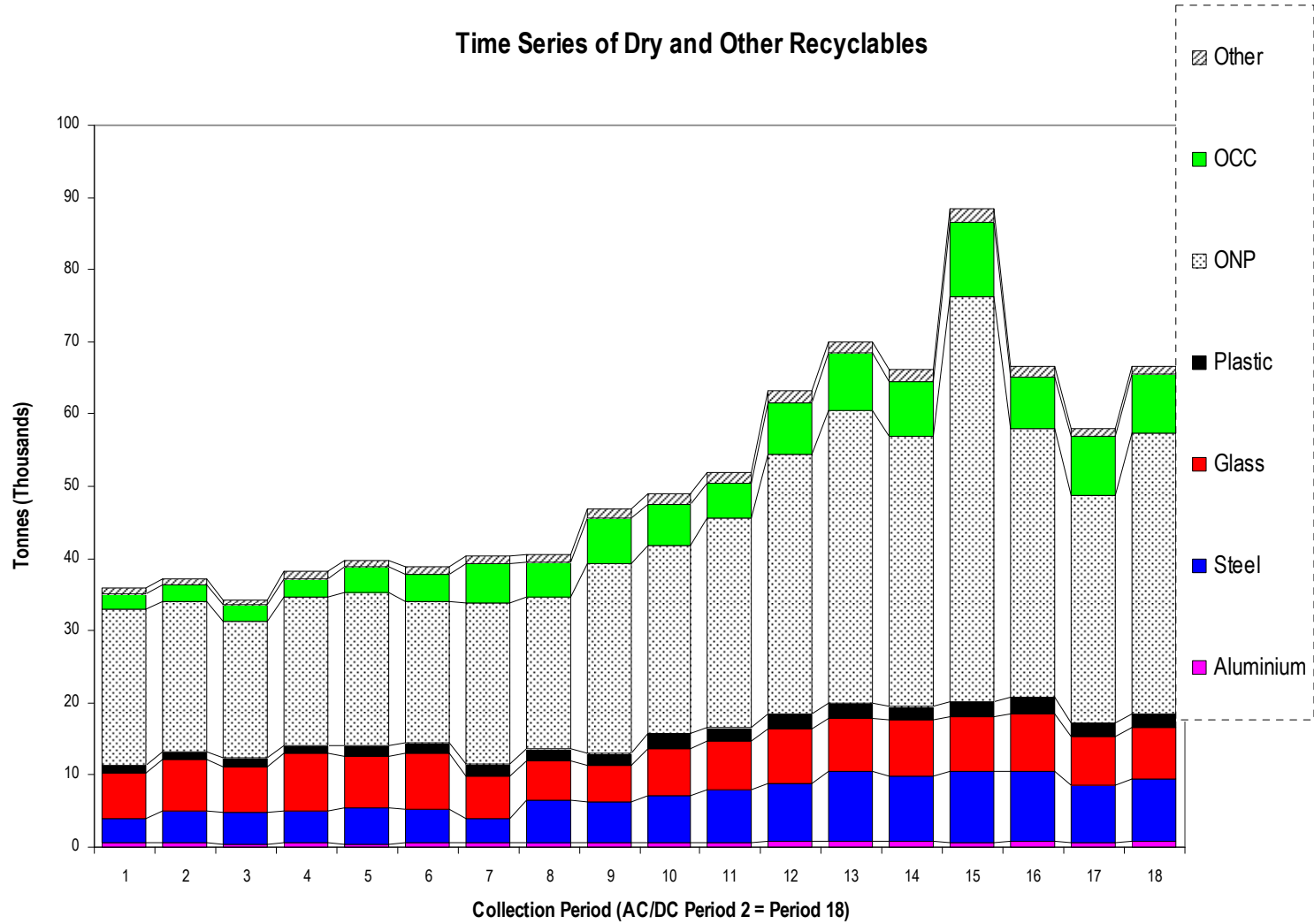


Collection Period (Date = period end, AC/DC Period 2 = Period 18)



# State-Wide Graph cont.

Time Series of Dry and Other Recyclables



**1,790,187t diverted from landfill**





## It's a long way to the top (if you want good data)

- Quality Assurance
- Value of Peer Review Group
- Clearly defined and consistent use of terms
- One avenue for reporting





## Where to from here...

- No Data collection scheme currently in place
- Need consistent and simple data collection scheme
- Certainty of funding – a long term data collection scheme needed





# Questions?

- **Contact Details**

Rebecca Brown

MWAC Executive Officer

Phone: 9213 2063

Email: [rbrown@walga.asn.au](mailto:rbrown@walga.asn.au)

