



WESTERN AUSTRALIAN
LOCAL GOVERNMENT
ASSOCIATION

RESOURCE RECOVERY REBATE SCHEME

Administration Report - Summary

Period 16

1 January 2006 to 30 June 2006

Final Tonnages, Rebates and
Recommendations for Improvement

Version no. 1

Prepared by the

MUNICIPAL WASTE ADVISORY COUNCIL



MUNICIPAL WASTE ADVISORY COUNCIL

"Getting the Environment Right"

TABLE OF CONTENTS

INTRODUCTION	3
COMPLIANCE WITH ADMINISTRATIVE REQUIREMENTS	4
RESOURCE RECOVERY REBATE SCHEME – SUMMARY RECOMMENDATIONS FOR IMPROVEMENTS IN FUTURE PERIODS	6
IMPACT OF RESOURCE RECOVERY REBATE SCHEME RELATED ACTIVITIES.....	7
SCHEDULE 1 – LIST OF RECOMMENDATIONS FOR IMPROVEMENTS TO THE RESOURCE RECOVERY REBATE SCHEME PERIOD 16.....	9
SCHEDULE 2 – REBATE SUMMARY	11
SCHEDULE 3 – TONNAGE SUMMARY	13
SCHEDULE 4 – INDIVIDUAL LOCAL GOVERNMENT SUMMARY	18
SCHEDULE 5 – CONFIRMATION OF DUE ADMINISTRATION PROCESS.....	43
APPENDIX 1 – RESOURCE RECOVERY REBATE SCHEME PERIOD 16 ADMINISTRATION PROCEDURE.....	44

INTRODUCTION

The Resource Recovery Rebate Scheme was introduced in January 2001 as a continuation of the Municipal Recycling Scheme which was effective from 1998 to 2000. This change was accompanied by an increased level of funding, changes to the way the rebate is calculated and increasingly stringent requirements on documentation supporting applications. This is the final period of the RRRS.

This report has been prepared in accordance with the agreed terms and conditions of the Memorandum of Understanding on the Resource Recovery Rebate Scheme and represents the culmination of a very significant body of work by the Municipal Waste Advisory Council in the development and application of scheme criteria and in the processing of the applications received.

This report outlines the assessment of the Period 16 Resource Recovery Rebate Scheme applications which cover material recycled, reused or recovered between the period 1st January 2006 to 30th June 2006.

The Administration Report - Summary contains the following sections:

Compliance with Administrative Requirements

A section outlining what the Municipal Waste Advisory Council has done to meet the specific administration obligations of the Resource Recovery Rebate Scheme Memorandum of Understanding.

Recommendations for the Improvement to the Resource Recovery Rebate Scheme

This section lists a series of current issues with the Resource Recovery Rebate Scheme and recommendations for dealing with them devised in conjunction with the Resource Recovery Rebate Scheme working group. These recommendations have been incorporated into the assessment of the applications and included as principles against which future applications can be assessed. A summary of the recommendations are listed in Schedule 1. These principles are the basis on which the applications are assessed therefore the validity of the final figures depend on these principles being approved by the Waste Management Board.

The Final Awarded Tonnes and Rebate.

The following summaries are included within this report;

Rebate Summary - A summary of the total tonnes and rebate awarded to each local government.

Tonnage Summary - A summary of tonnes claimed versus tonnes awarded and the reasons for any discrepancies.

Individual Local Government Summary - A breakdown of tonnes of each material awarded and the rebate awarded for each local government.

Administration Procedure

This section includes a detailed description of the criteria that all applicants must satisfy and the procedures used to assess the applications. The Period 16 Administration Procedure is included at Appendix 1.

COMPLIANCE WITH ADMINISTRATIVE REQUIREMENTS

The following advice is provided to demonstrate that the Municipal Waste Advisory Council has met its obligations in respect of the administrative duties outlined in the Resource Recovery Rebate Scheme Memorandum of Understanding.

Design and maintain the application forms and processes and the attendant database structure required to report on the scheme

As Period 16 is the final RRRS Application Period, the decision was made not to substantially change the form.

The project to upgrade the database and improve its reporting capacity was finalised in Period 15. The Report from this project will be provided with this and future Administration Reports.

Distribute to all eligible organisations prior to the end of each return period a copy of the Resource Recovery Rebate Scheme assessment guidelines and an application form

All local and regional governments in WA and the Rottnest Island Authority were provided with an application form and information package in early June 2006. The information package included an information sheet, frequently asked questions list, an application form, lodgement instructions and Greenwaste processing certificates.

All communications were distributed to local government and regional local government Chief Executive Officers to ensure appropriate processing of the documents.

Develop and distribute information to assist applicants with the scheme

Information items on the Scheme were published on numerous occasions in the Municipal Waste Advisory Council's *Information Bulletin* and in *Local Government News*. These publications are distributed to all local and regional governments in WA.

A full explanation of the Scheme has been published on the WasteNet website. It is believed that this will assist local governments understanding of the scheme.

Provide ongoing access to information and advice with respect to the scheme

Municipal Waste Advisory Council staff provided written and verbal advice on all aspects of the Scheme as requested by applicants that contacted Municipal Waste Advisory Council for information.

A detailed letter was sent to all participating local governments in June 2006 outlining specific problems with their applications to the previous application period. Local Governments received this feedback in time for them to incorporate this advice in to their Period 16 Applications. This method of feedback will continue to improve the standard of the applications. In turn, this will stabilise the time required to assess the applications, while maintaining the standard of the assessment process.

In each period, assess each application against the scheme assessment guidelines

All applications received have been assessed against the Resource Recovery Rebate Scheme Administration Procedures (refer Appendix 1) in the determination of eligible tonnes. The Municipal Waste Advisory Council applies a rigorous assessment process to all applications received. This includes the auditing of claims by cross-referencing supporting documents with tonnes claimed, follow-up of supporting documentation that has not been provided by applicants and deduction of the commercial component (if any) from the various collection methods used by applicants.

Twelve applications to the Scheme were received after the closing date. Nine Local Governments provided independent documentation on request, indicating that the applications were posted prior to or on the lodgement date as required by the Scheme Assessment Guidelines. The remaining late applications were discussed with the Resource Recovery Rebate Scheme Working Group and a recommendation has been made under "Summary Recommendations for Improvements in Future Periods".

Benchmarks and performance indicators were used during the Municipal Waste Advisory Council's assessment of Period 16 applications to identify local governments whose recovery systems achieved exceptionally high yields. Any anomalies in claims were investigated. Unless they had already been asked to do so in previous periods, those Local Governments with yields greater than one standard deviation above the average for that particular collection method were contacted and requested to provide possible reasons for the high performance of their systems and to confirm that material from commercial sources has not been included in their claim.

In each period, determine the eligible tonnes for each application for the purposes of calculating returns

The Rebate Summary – Period 16 shows returns generated from dry recyclables and Greenwaste / Organics.

In each period, provide to the Waste Management Board a schedule of returns detailing each organisation name, the tonnes claimed, eligible tonnes, recommended return, total of recommended returns and confirmation that each application has met the scheme requirements.

A detailed breakdown of materials awarded to each local government is provided in Schedule 2. This report provides awarded tonnes, rebate per tonne and total rebate for each material recovered through each system for each Local Government.

In each period, provide to the Waste Management Board a statement signed by the Chief Executive Officer of the Western Australian Local Government Association confirming that the process of administration described in Schedule 1 of the Memorandum of Understanding on the Resource Recovery Rebate Scheme has been carried out

The Confirmation of Due Administration Process statement signed by the Chief Executive Officer of the Western Australian Local Government Association attesting that the administration process has been carried out in accordance with the guidelines contained in the Memorandum of Understanding on the Municipal Recycling Scheme is provided in Schedule 5.

In each period, provide recommendations relating to the improvement and effectiveness of the Resource Recovery Rebate Scheme

Issues arising with the assessment of the Resource Recovery Rebate Scheme applications were considered by the Resource Recovery Rebate Scheme Working Group and a suitable mechanism for dealing with each issue is recommended in order to improve the effectiveness of the Resource Recovery Rebate Scheme. These recommendations are then incorporated as principles into the assessment procedure.

The Recommendations for Improvements to the Resource Recovery Rebate Scheme are included as Schedule 1. A summary of the updated assessment procedure is included as Appendix 1.

RESOURCE RECOVERY REBATE SCHEME – SUMMARY RECOMMENDATIONS FOR IMPROVEMENTS IN FUTURE PERIODS

Due to the delay between assessing the issues raised in one Period and the opportunity to implement changes with appropriate notification, suggested changes may take two periods to come into effect. However, there were no significant changes to the assessment process for Period 16 applications.

The Resource Recovery Rebate Scheme Working Group has met to consider issues pertaining to the operation of the Scheme and the Administration Report.

Late Application from City of Bayswater

The explanation for the late submission by the City of Bayswater was considered by the Working Group. Based on extenuating circumstances provided, the Working Group recommends that the claim be accepted.

- 1. That the claim to Period 16 of the Resource Recovery Rebate Scheme from the City of Bayswater be accepted.**

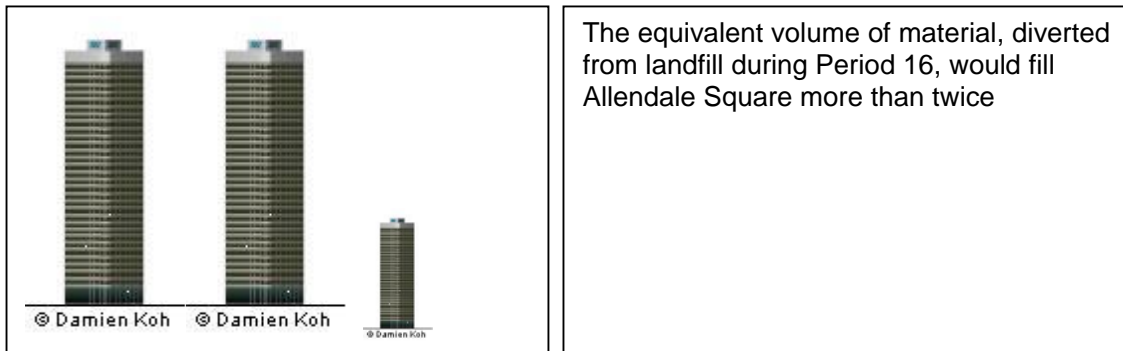
IMPACT OF RESOURCE RECOVERY REBATE SCHEME RELATED ACTIVITIES

The recycling and resource recovery activities of Western Australian local governments divert a large amount of material from landfill and therefore make a significant environmental contribution to the community.

Landfill Space Saved

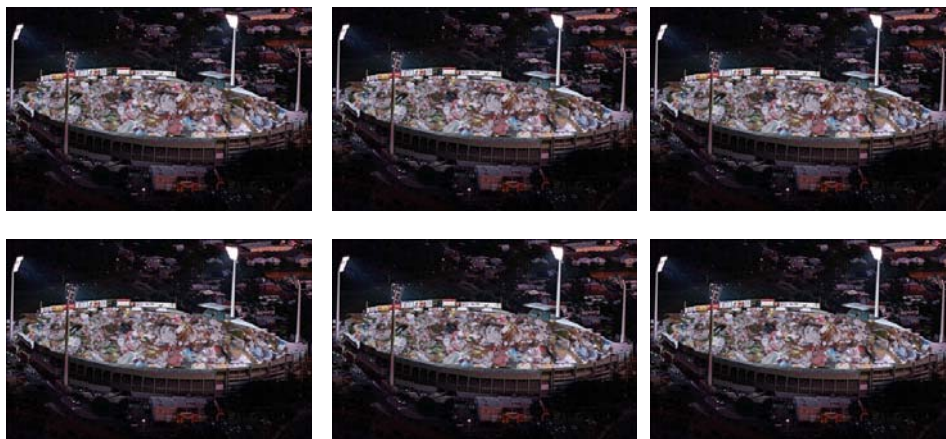
The Local Governments applying to the Resource Recovery Rebate Scheme (Resource Recovery Rebate Scheme) have reused, recycled or recovered over 135,602 tonnes of material during Period 16. Assuming that dry recyclables have a compacted density of 750kg/cubic metre and Greenwaste / Organic material has a density of 500kg/cubic metre, this represents a saving of approximately 226,447 cubic metres of landfill space.

This volume of material would fill enough 240L Mobile Garbage Bins (MGB's), which if laid end to end, would stretch approximately 1,019km; that is greater than the distance from Perth to Carnarvon.



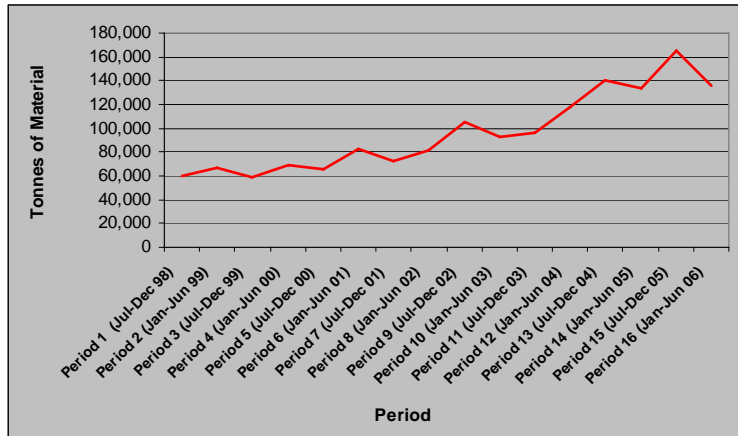
Over the lifetime of the Resource Recovery Rebate Scheme, a staggering total of 1,541,923 tonnes of material has been diverted from landfill.

That is enough to cover the surface of Subiaco Oval to a depth of over 127m, or the equivalent of filling Subiaco Oval to the height of the stands over 6 times.



In Period 16:

- 1) 72 Local Governments applied to the Scheme in this Period;**
- 2) Over 1.5 million tonnes of material has been awarded and diverted from landfill over the lifetime of the Scheme.**



Graph illustrating tonnes diverted from landfill for each period of the Scheme

Comparison of Tonnes Recovered

Total tonnes of recyclables awarded in Period 16 (135,602t) have decreased since Period 15 by 28,972t tonnes. The total value of the rebate for Period 16 is \$737,668.

Extrapolating tonnes recovered in Period 16 over a full year indicates a recovery rate from the municipal sector of approximately 23.3% (this is an under estimate as tonnes recovered from local government activities are not included in recovered tonnes but are included in the total tonnes assigned to the municipal sector in 2005 [893,862 – the base figure on which the 23.3% is calculated]).

The total tonnes of dry recyclables awarded for Period 16 was 67,136 tonnes. This amount includes 1,062 tonnes of resource recovery collection accrual from previous periods. This represents a decrease of 21,612 tonnes compared to Period 15.

The total of Greenwaste / Organic material awarded for Period 16 was 68,466 tonnes. This amount includes 2,731 tonnes of greenwaste / organic collection accrual from previous periods. This represents a decrease of 7,360 tonnes compared to Period 15.

Overall Net Benefit to Society for Dry recyclables

Assuming that all dry recyclables are collected through kerbside collection methods, and kerbside recycling delivers an overall average benefit of \$42 per household per year¹. Western Australian local governments delivered a benefit of approximately \$21.5 million dollars back into the community through their recycling and recovery activities during Period 16. Over a twelve month period this would equate to a net benefit to society of \$43 million.

Overall average benefit figures for recycling green and organic waste are unavailable at this time. These materials make up more than half of the materials collected through the Scheme, but are not captured in the estimated figure of \$43 million above.

Estimated Net Cost of Providing Kerbside Dry Recyclables Collection and Processing Service

The Independent Assessment of Kerbside Recycling in Australia found that the average cost of providing kerbside recycling services is \$26 hh/annum. Data from the Scheme indicates that the average cost to Western Australian Local Governments to provide recycling services for dry recyclables is \$27 hh/year. These two figures serve to demonstrate that the Local Governments who applied to the Scheme during Period 16 only, spent between \$7.5 million and \$7.8 million dollars during this six month period to provide recycling services. Extrapolated over a twelve month period, this equates to a net cost to Local Government of between \$15 million and \$15.6 million to provide a kerbside recycling service. Please note this does not include the cost of providing green / organic waste collection and recovery services.

¹ Nolan ITU Pty Ltd and Sinclair Knight Merz (2001) *Independent Assessment of Kerbside Recycling in Australia Volume 1. Based on the figures in this report each tonne of recyclables generates a net benefit of \$323.*
Resource Recovery Rebate Scheme Administration Report – Summary – Period 16 (1 January 2006 – 30 June 2006)

SCHEDULE 1

LIST OF RECOMMENDATIONS FOR IMPROVEMENTS TO THE RESOURCE RECOVERY REBATE SCHEME

Period 16

List of Recommendations for Consideration of the Waste Management Board in Period 16

The following recommendations require consideration by the Waste Management Board. The recommendations relate to the Period 16 figures included in this report. It is essential that a decision is reached on these recommendations to allow processing of the Period 16 administration report.

It is recommended that the Waste Management Board consider the following recommendations with respect to the operation of the Scheme and provide written advice to the Municipal Waste Advisory Council on the determinations reached in respect to each recommendation.

- 1. That the claim to Period 16 of the Resource Recovery Rebate Scheme from the City of Bayswater be accepted.**

SCHEDULE 2

REBATE SUMMARY

Period 16

Rebate Summary - RRRS Period 16 (1 January 2006 to 30 June 2006)

Local Government	Total Traditional Recyclables Tonnes	Total \$ for Traditional Recyclables	Average Rebate per Tonne of Traditional Recyclables	Total Greenwaste Tonnes**	Total \$ for Greenwaste	Average Rebate per Tonne of Greenwaste	Total Tonnes	Total Rebate (\$)	Average Rebate per Tonne (\$/t)
Albany	1,602.62	\$16,920.74	\$10.56	255.00	\$1,104.29	\$4.33	1,857.62	\$18,025.03	\$9.70
Armadale	2,942.80	\$15,185.80	\$5.16	1,721.89	\$7,521.23	\$4.37	4,664.69	\$22,707.03	\$4.87
Augusta-Margaret River	1,734.18	\$25,381.56	\$14.64	12.34	\$52.08	\$4.22	1,746.51	\$25,433.65	\$14.56
Bassendean	700.11	\$3,254.93	\$4.65	227.60	\$794.31	\$3.49	927.71	\$4,049.24	\$4.36
Bayswater	1,995.46	\$8,989.67	\$4.51	2,800.16	\$10,947.67	\$3.91	4,795.62	\$19,937.34	\$4.16
Belmont	1,035.49	\$4,954.54	\$4.78				1,035.49	\$4,954.54	\$4.78
Boypur Brook	30.30	\$440.93	\$14.55				30.30	\$440.93	\$14.55
Bridgetown-Greenbushes	200.16	\$3,188.83	\$15.93				200.16	\$3,188.83	\$15.93
Brookton	2.38	\$21.15	\$8.90				2.38	\$21.15	\$8.90
Broome	237.75	\$2,746.43	\$11.55				237.75	\$2,746.43	\$11.55
Bunbury	1,507.15	\$15,033.82	\$9.97	305.74	\$1,224.95	\$4.01	1,812.89	\$16,258.77	\$8.97
Bussetton	1,403.59	\$14,311.26	\$10.20				1,403.59	\$14,311.26	\$10.20
Cambridge	840.84	\$4,030.94	\$4.79	295.64	\$1,101.76	\$3.73	1,136.48	\$5,132.70	\$4.52
Canning	3,077.13	\$14,522.16	\$4.72	2,000.68	\$7,757.38	\$3.88	5,077.81	\$22,279.54	\$4.39
Capel	515.01	\$5,568.06	\$10.81	32.80	\$139.89	\$4.26	547.81	\$5,707.94	\$10.42
Chittering	213.44	\$3,258.01	\$15.26				213.44	\$3,258.01	\$15.26
Claremont	631.93	\$2,716.87	\$4.30	394.38	\$1,342.41	\$3.40	1,026.31	\$4,059.28	\$3.96
Cockburn	2,920.40	\$14,644.17	\$5.01	518.42	\$2,076.83	\$4.01	3,438.82	\$16,721.00	\$4.86
Corrigin	20.94	\$211.43	\$10.10				20.94	\$211.43	\$10.10
Cottesloe	481.62	\$2,093.84	\$4.35	247.76	\$827.34	\$3.34	729.38	\$2,921.17	\$4.01
Cuballing	45.55	\$721.30	\$15.84				45.55	\$721.30	\$15.84
Cunderdin	26.36	\$266.17	\$10.10				26.36	\$266.17	\$10.10
Dalwallinu	37.38	\$379.03	\$10.14				37.38	\$379.03	\$10.14
Dandaragan	137.76	\$2,160.41	\$15.68				137.76	\$2,160.41	\$15.68
Dardanup	358.56	\$3,617.59	\$10.09				358.56	\$3,617.59	\$10.09
Denmark	492.26	\$7,146.21	\$14.52	5.76	\$24.44	\$4.24	498.02	\$7,170.65	\$14.40
Donnybrook-Balingup	401.31	\$5,752.38	\$14.33				401.31	\$5,752.38	\$14.33
EMRC	137.49	\$642.28	\$4.67	7.74	\$32.18	\$4.16	145.23	\$674.45	\$4.64
Esperance	494.56	\$5,548.30	\$11.22				494.56	\$5,548.30	\$11.22
Fremantle	1,124.96	\$5,058.84	\$4.50	529.98	\$1,861.01	\$3.51	1,654.94	\$6,919.85	\$4.18
GGRC	226.47	\$2,321.06	\$10.25	762.53	\$3,268.47	\$4.29	989.00	\$5,589.53	\$5.65
Goomalling	141.92	\$1,980.23	\$13.95				141.92	\$1,980.23	\$13.95
Gosnells	3,176.85	\$15,292.96	\$4.81	827.60	\$3,102.03	\$3.75	4,004.45	\$18,394.99	\$4.59
Harvey	948.95	\$9,072.34	\$9.56				948.95	\$9,072.34	\$9.56
Irwin	27.31	\$434.84	\$15.92				27.31	\$434.84	\$15.92
Joondalup	1,683.83	\$7,142.37	\$4.24	2,232.40	\$7,777.70	\$3.48	3,916.23	\$14,920.07	\$3.81
Kalamunda	1,909.25	\$10,154.98	\$5.32	1,717.03	\$7,540.65	\$4.39	3,626.28	\$17,695.64	\$4.88
Kojonup	121.18	\$1,939.04	\$16.00				121.18	\$1,939.04	\$16.00
Kwinana	844.11	\$4,231.94	\$5.01	378.55	\$1,524.81	\$4.03	1,222.66	\$5,756.75	\$4.71
Mandurah	3,071.31	\$28,912.06	\$9.41	2,305.84	\$9,212.80	\$4.00	5,377.15	\$38,124.86	\$7.09
Manjimup	386.12	\$6,355.93	\$16.46	141.00	\$604.37	\$4.29	527.12	\$6,960.30	\$13.20
Melville	3,877.09	\$17,434.94	\$4.50	3,204.24	\$11,665.39	\$3.64	7,081.33	\$29,100.33	\$4.11
Merredin	123.70	\$1,945.32	\$15.73				123.70	\$1,945.32	\$15.73
MRC	804.42	\$3,576.37	\$4.45	75.62	\$294.83	\$3.90	880.04	\$3,871.20	\$4.40
Mingenew	110.13	\$1,829.29	\$16.61				110.13	\$1,829.29	\$16.61
Moora	16.61	\$254.23	\$15.30				16.61	\$254.23	\$15.30
Mosman Park	442.24	\$1,922.96	\$4.35	242.76	\$821.09	\$3.38	685.00	\$2,744.05	\$4.01
Mt Marshall	4.20	\$65.58	\$15.61				4.20	\$65.58	\$15.61
Mundaring	1,791.45	\$9,249.72	\$5.16	3,477.73	\$16,478.63	\$4.74	5,269.18	\$25,728.35	\$4.88
Murray	633.27	\$7,377.38	\$11.65				633.27	\$7,377.38	\$11.65
Nannup	167.88	\$2,688.48	\$16.01				167.88	\$2,688.48	\$16.01
Nedlands	1,220.05	\$5,963.70	\$4.89	687.95	\$2,652.63	\$3.86	1,908.00	\$8,616.33	\$4.52
Northam (Shire)	151.61	\$2,318.31	\$15.29				151.61	\$2,318.31	\$15.29
Northam (Town)	200.20	\$2,988.71	\$14.93				200.20	\$2,988.71	\$14.93
Peppermint Grove	93.35	\$454.18	\$4.87				93.35	\$454.18	\$4.87
Perth	303.00	\$1,420.37	\$4.69				303.00	\$1,420.37	\$4.69
Pingelly	3.63	\$34.17	\$9.41				3.63	\$34.17	\$9.41
Rockingham	3,931.84	\$19,603.19	\$4.99	2,666.68	\$10,910.24	\$4.09	6,598.52	\$30,513.42	\$4.62
Serpentine - Jarrahdale	489.13	\$2,662.55	\$5.44				489.13	\$2,662.55	\$5.44
South Perth	2,030.43	\$9,115.41	\$4.49	3,852.12	\$15,450.95	\$4.01	5,882.55	\$24,566.36	\$4.18
SMRC	2,663.04	\$15,622.23	\$5.87	17,898.06	\$84,753.66	\$4.74	20,561.10	\$100,375.89	\$4.88
Stirling	4,907.12	\$30,511.66	\$6.22	13,893.02	\$63,328.42	\$4.56	18,800.14	\$93,840.08	\$4.99
Subiaco	603.98	\$2,397.85	\$3.97	296.15	\$963.43	\$3.25	900.13	\$3,361.28	\$3.73
Swan	1,396.73	\$7,190.59	\$5.15	738.96	\$3,135.61	\$4.24	2,135.69	\$10,326.20	\$4.84
Victoria Park	907.88	\$4,036.87	\$4.45	485.63	\$1,705.27	\$3.51	1,393.51	\$5,742.15	\$4.12
Vincent	1,017.95	\$4,238.03	\$4.16	327.20	\$1,050.36	\$3.21	1,345.15	\$5,288.38	\$3.93
Wanneroo	873.77	\$4,388.23	\$5.02	2,899.72	\$12,696.20	\$4.38	3,773.49	\$17,084.43	\$4.53
Waroona	306.17	\$4,016.09	\$13.12				306.17	\$4,016.09	\$13.12
WMRC	2.52	\$7.13	\$2.83				2.52	\$7.13	\$2.83
Wickepin	41.30	\$417.78	\$10.12				41.30	\$417.78	\$10.12
Wongan Ballidu	64.14	\$842.76	\$13.14				64.14	\$842.76	\$13.14
York	70.18	\$743.25	\$10.59				70.18	\$743.25	\$10.59
Total	67,135.74	\$441,922.67	\$6.58	68,466.68	\$295,745.33	\$4.32	135,602.42	\$737,668.00	\$5.44

**Please note - for the purposes of the table greenwaste also includes foodwaste that is recovered through resource recovery systems.

SCHEDULE 3

TONNAGE SUMMARY

Period 16

Tonnage Summary - RRRS Period 16 (1 January 2006 to 30 June 2006)

Local Government	Total claimed Traditional Recyclables tonnes (includes resource recovery)	Total awarded Traditional Recyclables tonnes (include resource recovery)	Total eligible tonnes of greenwaste collected (includes resource recovery)	Total claimed greenwaste tonnes (includes resource recovery)	Total awarded greenwaste tonnes + collection accrual (includes resource recovery)	Total claimed tonnes	Total awarded tonnes	Reason
Albany*	1,602.62	1,602.62	1,246.43	1,246.43	255.00	2,849.04	1,857.62	*Greenwaste collection accrual generated.
Armadale	3,057.56	2,942.80	2,104.30	2,119.98	1,721.89	5,177.54	4,664.69	Kerbside: Less 41.59t commercial content (Local Government nominated 2.4% as commercial). Drop off: Less 46.89t commercial content (Local Government nominated 40% of OCC as commercial). Less 18.12t tyres, material not recycled by processor, currently stored in landfill. Less 8.16t, insufficient documentation. Greenwaste: Less 398.09t, insufficient documentation.
Augusta-Margaret River	1,790.02	1,734.18	89.60	17.63	12.34	1,807.65	1,746.51	Drop off: Less 50.31t commercial content (Local Government nominated 15% as commercial). Less 5.53t, insufficient documentation. Greenwaste: Less 5.29t commercial content (Local Government nominated 30% as commercial).
Bassendean	828.48	700.11	711.50	227.60	227.60	1,056.08	927.71	Kerbside: Less 128.28t of waste, claimed but not awarded. Drop off: Less 0.09t commercial content (Local Government nominated 10% as commercial). Greenwaste: includes 54.36t reused in extension period.
Bayswater	2,143.20	1,995.46	2,800.16	2,800.16	2,800.16	4,943.36	4,795.62	Kerbside: Less 90.62t commercial content (Local Government nominated 4.7% as commercial). Drop Off: Less 52.46t commercial content (Local Government nominated 25% as commercial). Less 4.66t, material outside collection period.
Belmont	1,129.40	1,035.49				1,129.40	1,035.49	Kerbside: Less 93.91t commercial content (Local Government nominated 8.45% as commercial).
Boyup Brook	32.98	30.30				32.98	30.30	Drop off: Less 2.68t commercial content (Local Government nominated 10% as commercial).
Bridgetown-Greenbushes	222.69	200.16				222.69	200.16	Drop off: Less 22.24t commercial content (Local Government nominated 10% as commercial). Less 0.29t, calculation difference.
Brookton	2.38	2.38				2.38	2.38	
Broome	238.80	237.75				238.80	237.75	Drop off: less 1.05t used oil, calculation difference.
Bunbury	1,532.93	1,507.15	305.74	305.74	305.74	1,838.67	1,812.89	Kerbside: Less 13.96t commercial content (Local Government nominated 1% as commercial). Vergeside: Less 11.82t, insufficient documentation.
Busselton	1,509.46	1,403.59				1,509.46	1,403.59	Kerbside: Less 0.08t rounding difference. Drop off: Less 44.84t commercial content (Local Government nominated 20% as commercial). Less 59.8t could not provide additional documentation. Less 1.15t calculation difference.
Cambridge	841.23	840.84	295.64	295.64	295.64	1,136.87	1,136.48	Kerbside: Less 0.39t commercial content (Local Government nominated 0.04% as commercial).
Canning	3,080.76	3,077.13	2,000.68	2,000.68	2,000.68	5,081.44	5,077.81	Drop off: Less 3.63t commercial content (Local Government nominated 20% as commercial on oil and batteries)
Capel	520.06	515.01	32.80	32.80	32.80	552.86	547.81	Kerbside: Less 0.69t commercial content (Local Government nominated 0.2% as commercial). Vergeside: Less 4.36t, insufficient documentation.
Chittering	216.34	213.44				216.34	213.44	Drop off: Less 2.9t commercial content (Local Government nominated 1% as commercial).
Claremont	631.93	631.93	394.38	394.38	394.38	1,026.31	1,026.31	
Cockburn*	2,945.68	2,920.40	521.12	518.42	518.42	3,464.10	3,438.82	Kerbside: Less 25.28t (Local Government nominated 1.97% as commercial content). *Greenwaste collection accrual generated.

Tonnage Summary - RRRS Period 16 (1 January 2006 to 30 June 2006)

Local Government	Total claimed Traditional Recyclables tonnes (includes resource recovery)	Total awarded Traditional Recyclables tonnes (include resource recovery)	Total eligible tonnes of greenwaste collected (includes resource recovery)	Total claimed greenwaste tonnes (includes resource recovery)	Total awarded greenwaste tonnes + collection accrual (includes resource recovery)	Total claimed tonnes	Total awarded tonnes	Reason
Corrigin	31.42	20.94				31.42	20.94	Kerbside: Less 10.48t commercial content (Local Government nominated 33.7% as commercial)
Cottesloe	534.00	481.62	247.76	247.76	247.76	781.76	729.38	Kerbside: Less 52.38t commercial content (Local Government nominated 10% as commercial).
Cuballing	91.10	45.55				91.10	45.55	Drop off: Less 45.55t commercial content (Local Government nominated 50% as commercial).
Cunderdin	30.99	26.36				30.99	26.36	Kerbside: Less 4.63t commercial content (Local Government nominated 14.5% as commercial).
Dalwallinu	56.35	37.38				56.35	37.38	Kerbside: Less 7.56t commercial content (Local Government nominated 16.8% commercial). Less 11.41t waste, claimed but not awarded.
Dandaragan	198.38	137.76				198.38	137.76	Drop off: Less 45.9t commercial content (Local Government nominated 25% commercial). Less 14.72t material outside application period.
Dardanup	362.19	358.56				362.19	358.56	Kerbside: Less 3.63t commercial content (Local Government nominated 1.1% commercial content)
Denmark	495.54	492.26	5.76	5.76	5.76	501.30	498.02	Kerbside: Less 3.28t commercial content (Local Government nominated 2.18% as commercial).
Donnybrook-Ballingup	404.94	401.31				404.94	401.31	Kerbside: Less 0.31t calculation difference. Drop off: Less 2.81t commercial content (Local Government nominated 1% commercial content). Less 0.50t insufficient documentation. Less 0.01t rounding difference.
Eastern Metropolitan Regional Council	147.31	137.49	3,291.08	7.74	7.74	155.05	145.23	Drop off: Less 9.82t tyres, material not recycled by processor, currently stored underground.
Esperance	554.55	494.56				554.55	494.56	Kerbside: Less 12.03t commercial content (Local Government nominated 2.7% as commercial). Drop off: Less 47.96t commercial content (Local Government nominated 40% as commercial).
Fremantle	1,124.96	1,124.96	529.98	529.98	529.98	1,654.94	1,654.94	Drop off: Less 26.9t commercial content (Local Government nominated 10% commercial). Less 0.02t rounding difference.
Geraldton Greenough Regional Council	253.38	226.47	847.26	847.26	762.53	1,100.64	989.00	Greenwaste: Less 84.72t commercial content (Local Government nominated 5% commercial) Kerbside: Less 0.043t commercial content (Local Government nominated 0.08% commercial). Drop off: Less 0.775t commercial content (Local Government nominated 1.5% as commercial). Less 90t, insufficient documentation.
Goomalling	232.74	141.92				232.74	141.92	Drop off: Less 0.3t calculation difference.
Gosnells	3,177.15	3,176.85	827.60	827.60	827.60	4,004.75	4,004.45	Kerbside: Less 157.18t waste, claimed but not awarded.
Harvey	1,121.11	948.95				1,121.11	948.95	Drop off: Less 14.98t commercial content (Local Government nominated 10% as commercial)
Irwin	28.73	27.31				28.73	27.31	Drop off: Less 1.42t commercial content (Local Government nominated 5% as commercial).
Joondalup*	1,683.83	1,683.83	3,485.54	3,485.54	2,232.40	5,169.37	3,916.23	*Greenwaste collection accrual generated.
Kalamunda*	1,909.25	1,909.25	1,789.03	1,789.03	1,717.03	3,698.28	3,626.28	*Greenwaste collection accrual generated.

Tonnage Summary - RRRS Period 16 (1 January 2006 to 30 June 2006)

Local Government	Total claimed Traditional Recyclables tonnes (includes resource recovery)	Total awarded Traditional Recyclables tonnes (include resource recovery)	Total eligible tonnes of greenwaste collected (includes resource recovery)	Total claimed greenwaste tonnes (includes resource recovery)	Total awarded greenwaste tonnes + collection accrual (includes resource recovery)	Total claimed tonnes	Total awarded tonnes	Reason
Kojonup	360.11	121.18				360.11	121.18	Kerbside: Less 0.28t , insufficient documentation. Drop off: Less 29.77t commercial content (Local Government nominated 20% as commercial). Less 7.04t material outside application period. Less 201.84t, insufficient documentation.
Kwinana	847.19	844.11	378.55	378.55	378.55	1,225.74	1,222.66	Kerbside: Less 3.08t commercial content (Local Government nominated 0.36% as commercial).
Mandurah	3,246.91	3,071.31	2,305.84	2,305.84	2,305.84	5,552.75	5,377.15	Drop off: Less 174.16t claimed in vergeside collection. Less 1.44t, insufficient documentation.
Manjimup	557.66	386.12	141.00	141.00	141.00	698.66	527.12	Drop off: Less 131.54t commercial content (Local Government nominated 40% ferrous, 10% OCC as commercial). Less 40t calculation difference.
Melville	3,885.64	3,877.09	3,204.24	3,204.24	3,204.24	7,089.88	7,081.33	Kerbside: Less 8.55t commercial content (Local Government nominated 0.22% as commercial).
Merredin	131.21	123.70				131.21	123.70	Drop off: Less 7.51t commercial content (Local Government nominated 5% as commercial).
Mindarie Regional Council	832.28	804.42	75.62	75.62	75.62	907.90	880.04	Drop off: Less 7.52t commercial content (Local Government nominated 1% as commercial). Less 20.34t, insufficient documentation.
Mingenew	115.00	110.13				115.00	110.13	Drop off: Less 4.87t commercial content (Local Government nominated 4% as commercial).
Moora	16.61	16.61				16.61	16.61	
Mosman Park	516.59	442.24	242.76	242.76	242.76	759.35	685.00	Kerbside: Less 74.35t commercial content (Local Government nominated 15.86% as commercial).
Mt Marshall	4.30	4.20				4.30	4.20	Drop off: Less 0.1t, calculation difference.
Mundaring	1,794.71	1,791.45	3,477.73	3,477.73	3,477.73	5,272.44	5,269.18	Drop off: Less 3.26t, insufficient documentation.
Murray	716.59	633.27				716.59	633.27	Kerbside: Less 55.48t commercial content (Local Government nominated 12.1% as commercial). Drop off: Less 14.45t commercial content (Local Government nominated 6% as commercial). Less 13.39t tyres, material not recycled by processor, currently stored underground.
Nannup	167.88	167.88				167.88	167.88	
Nedlands	1,251.20	1,220.05	687.95	687.95	687.95	1,939.15	1,908.00	Kerbside: Less 31.12t commercial content (Local Government nominated 2.45% as commercial). Less 0.03t rounding difference.
Northam (Shire)	168.88	151.61				168.88	151.61	Drop off: Less 17.27t commercial content (Local Government nominated 10% as commercial).
Northam (Town)	227.70	200.20				227.70	200.20	Drop off: Less 27.5t commercial content (Local Government nominated 15% ferrous metals as commercial).
Peppermint Grove	93.35	93.35				93.35	93.35	
Perth	303.00	303.00				303.00	303.00	
Pingelly	3.63	3.63				3.63	3.63	
Rockingham	4,001.03	3,931.84	2,365.99	2,666.68	2,666.68	6,667.71	6,598.52	Kerbside: Less 3.25t commercial content (Local Government nominated 0.1% as commercial). Vergeside: Less 6.04t, insufficient documentation. Drop off: Less 58.70t commercial content (Local Government nominated 10% as commercial). Less 1.2t, insufficient documentation.
Serpentine-Jarrahdale	597.83	489.13				597.83	489.13	Kerbside: Less 0.27t commercial content (Local Government nominated 0.4% as commercial). Less 108.43t contaminants, claimed but not awarded.

Tonnage Summary - RRRS Period 16 (1 January 2006 to 30 June 2006)

Local Government	Total claimed Traditional Recyclables tonnes (includes resource recovery)	Total awarded Traditional Recyclables tonnes (include resource recovery)	Total eligible tonnes of greenwaste collected (includes resource recovery)	Total claimed greenwaste tonnes (includes resource recovery)	Total awarded greenwaste tonnes + collection accrual (includes resource recovery)	Total claimed tonnes	Total awarded tonnes	Reason
South Perth*	2,484.13	2,030.43	5,258.22	6,845.45	3,852.12	9,329.58	5,882.55	Kerbside: Less 28.96t commercial content (Local Government nominated 2% as commercial). Vergeside: Less 35.46t insufficient documentation. Drop off: Less 0.41t commercial content (Local Government nominated 1% as commercial). *Resource Recovery collection accrual generated.
Southern Metropolitan Regional Council*	1,601.30	2,663.04	16,750.37	17,898.06	17,898.06	19,499.36	20,561.10	Resource Recovery: Less 123.4t commercial content (Regional Council nominated 0.8% as commercial). *Resource Recovery collection accrual used.
Stirling *	11,028.91	4,907.12	27,334.45	19,376.18	13,893.02	30,405.09	18,800.14	Drop off: Less 72.87t insufficient documentation. *Resource Recovery collection accrual generated.
Subiaco	603.98	603.98	296.15	296.15	296.15	900.13	900.13	
Swan	1,485.96	1,396.73	918.36	562.44	738.96	2,048.40	2,135.69	Kerbside: Less 89.23t commercial content (Local Government nominated 5.56% as commercial). *Greenwaste collection accrual used.
Victoria Park	907.88	907.88	485.63	485.63	485.63	1,393.51	1,393.51	
Vincent	1,132.00	1,017.95	327.20	372.20	327.20	1,504.20	1,345.15	Kerbside: Less 69.09t commercial content (Local Government nominated 6.5% as commercial). Vergeside: Less 44.96t, insufficient documentation. *Greenwaste collection accrual used.
Wanneroo*	873.77	873.77	3,271.92	1,493.00	2,899.72	2,366.77	3,773.49	*Greenwaste collection accrual used.
Waroona	306.17	306.17				306.17	306.17	
Western Metropolitan Regional Council	2.52	2.52				2.52	2.52	
Wickepin	42.68	41.30				42.68	41.30	Kerbside: Less 1.38t commercial content (Local Government nominated 3.2% as commercial). Kerbside: Less 7.47t commercial content (Local Government nominated 19.6% as commercial). Less 7.02t waste, claimed but not awarded.
Wongan Ballidu	87.03	64.14				87.03	64.14	Drop off: Less 8.4t commercial content (Local Government nominated 20% as commercial). Kerbside: Less 45.7t commercial content (Local Government nominated 45% as commercial). Less 25.79t contaminants, claimed but not awarded.
York	144.38	70.18				144.38	70.18	Drop off: Less 2.71t commercial content (Local Government nominated 15% as commercial).
Totals	75,304.43	67,135.74	89,048.34	78,209.60	68,466.68	153,514.03	135,602.42	

SCHEDULE 4

INDIVIDUAL LOCAL GOVERNMENT SUMMARY

Period 16

Local Government	Material	Kerbside			Vergeside			Dropoff			Resource Recovery			Totals	
		Tonnes of material	Rebate (\$/t)	Rebate (\$)	Tonnes of material	Rebate (\$/t)	Rebate (\$)	Tonnes of material	Rebate (\$/t)	Rebate (\$)	Tonnes of material	Rebate (\$/t)	Rebate (\$)	Tonnes of material	Rebate (\$)
Albany	Aluminium cans	13.60	\$11.79	\$160.31				1.47	\$11.45	\$16.84				15.07	\$177.15
	Steel cans	24.59	\$10.31	\$253.56				2.67	\$9.98	\$26.64				27.26	\$280.20
	Glass	264.62	\$9.94	\$2,630.98				28.97	\$9.61	\$278.37				293.59	\$2,909.35
	ONP	522.09	\$10.75	\$5,614.69				57.15	\$10.42	\$595.54				579.24	\$6,210.23
	OCC	236.58	\$11.16	\$2,640.26				26.68	\$10.83	\$288.85				263.26	\$2,929.12
	LPB	3.01	\$11.12	\$33.48				0.32	\$10.79	\$3.45				3.33	\$36.93
	PET	15.85	\$11.05	\$175.13				1.79	\$10.72	\$19.18				17.64	\$194.31
	HDPE	21.10	\$11.05	\$233.14				2.37	\$10.72	\$25.40				23.47	\$258.54
	Batteries							5.43	\$9.68	\$52.53				5.43	\$52.53
	Ferrous metal							342.62	\$10.35	\$3,545.03				342.62	\$3,545.03
	Solvents and paints														
	Hazardous														
	Inert														
	Non ferrous							3.52	\$10.35	\$36.42				3.52	\$36.42
	Oil							11.78	\$9.35	\$110.16				11.78	\$110.16
	Textiles														
	Tyres														
	Wood/timber offcuts														
	Food waste														
	Mixed plastic	14.77	\$11.05	\$163.20				1.64	\$10.72	\$17.57				16.41	\$180.77
Greenwaste	135.66	\$4.43	\$600.46				119.34	\$4.22	\$503.82				255.00	\$1,104.29	
Totals	1,251.87	\$10.19	\$12,505.22				605.75	\$9.93	\$5,519.81				1,857.62	\$18,025.03	

Local Government	Material	Kerbside			Vergeside			Dropoff			Resource Recovery			Totals	
		Tonnes of material	Rebate (\$/t)	Rebate (\$)	Tonnes of material	Rebate (\$/t)	Rebate (\$)	Tonnes of material	Rebate (\$/t)	Rebate (\$)	Tonnes of material	Rebate (\$/t)	Rebate (\$)	Tonnes of material	Rebate (\$)
Armadale	Aluminium cans	22.07	\$6.38	\$140.91										22.07	\$140.91
	Steel cans	33.30	\$4.91	\$163.47				14.06	\$4.58	\$64.33				47.36	\$227.80
	Glass	176.66	\$4.54	\$802.04										176.66	\$802.04
	ONP	1,157.63	\$5.35	\$6,195.36				70.60	\$5.02	\$354.26				1,228.23	\$6,549.62
	OCC	224.98	\$5.76	\$1,295.35										224.98	\$1,295.35
	LPB	1.72	\$5.72	\$9.84										1.72	\$9.84
	PET	25.66	\$5.65	\$144.90										25.66	\$144.90
	HDPE	30.72	\$5.65	\$173.47										30.72	\$173.47
	Batteries							29.91	\$4.28	\$128.02				29.91	\$128.02
	Ferrous metal	7.03	\$5.67	\$39.83	280.74	\$4.97	\$1,394.12	796.02	\$4.94	\$3,935.80				1,083.79	\$5,369.74
	Solvents and paints														
	Hazardous														
	Inert							0.71	\$4.21	\$2.99				0.71	\$2.99
	Non ferrous							15.18	\$4.94	\$75.06				15.18	\$75.06
	Oil							16.04	\$3.95	\$63.33				16.04	\$63.33
	Textiles														
	Tyres														
	Wood/timber offcuts							11.24	\$4.21	\$47.28				11.24	\$47.28
	Food waste														
	Mixed plastic	11.59	\$5.65	\$65.45				16.94	\$5.31	\$90.01				28.53	\$155.46
Greenwaste				1,425.49	\$4.39	\$6,263.53	298.40	\$4.24	\$1,257.71				1,723.89	\$7,521.23	
Totals	1,691.36	\$5.19	\$9,030.62	1,706.23	\$4.52	\$7,657.64	1,267.10	\$4.80	\$6,018.77				4,664.69	\$22,707.03	

Local Government	Material	Kerbside			Vergeside			Dropoff			Resource Recovery			Totals	
		Tonnes of material	Rebate (\$/t)	Rebate (\$)	Tonnes of material	Rebate (\$/t)	Rebate (\$)	Tonnes of material	Rebate (\$/t)	Rebate (\$)	Tonnes of material	Rebate (\$/t)	Rebate (\$)	Tonnes of material	Rebate (\$)
Augusta-Margaret River	Aluminium cans	10.35	\$11.27	\$116.65				2.09	\$17.27	\$36.12				12.44	\$152.77
	Steel cans	13.44	\$9.79	\$131.64										13.44	\$131.64
	Glass	100.31	\$9.43	\$945.51				82.91	\$15.42	\$1,278.50				183.22	\$2,224.01
	ONP	243.53	\$10.24	\$2,493.18				26.82	\$16.23	\$435.34				270.35	\$2,928.53
	OCC	46.12	\$10.64	\$490.88				96.67	\$16.64	\$1,608.39				142.79	\$2,099.27
	LPB														
	PET	9.32	\$10.53	\$98.17				5.43	\$16.53	\$89.76				14.75	\$187.93
	HDPE	10.35	\$10.53	\$109.02										10.35	\$109.02
	Batteries							13.32	\$15.49	\$206.38				13.32	\$206.38
	Ferrous metal							1,064.91	\$16.16	\$17,207.18				1,064.91	\$17,207.18
	Solvents and paints														
	Hazardous														
	Inert														
	Non ferrous							3.98	\$16.16	\$64.36				3.98	\$64.36
	Oil							2.68	\$15.16	\$40.59				2.68	\$40.59
	Textiles														
	Tyres														
	Wood/timber offcuts							1.94	\$15.42	\$29.88				1.94	\$29.88
	Food waste														
	Mixed plastic														
Greenwaste							12.34	\$4.22	\$52.08				12.34	\$52.08	
Totals	433.42	\$9.71	\$4,385.05				1,313.09	\$15.45	\$21,048.59				1,746.51	\$25,433.65	

Local Government	Material	Kerbside			Vergeside			Dropoff			Resource Recovery			Totals	
		Tonnes of material	Rebate (\$/t)	Rebate (\$)	Tonnes of material	Rebate (\$/t)	Rebate (\$)	Tonnes of material	Rebate (\$/t)	Rebate (\$)	Tonnes of material	Rebate (\$/t)	Rebate (\$)	Tonnes of material	Rebate (\$)
Bassendean	Aluminium cans	11.59	\$5.74	\$66.52									11.59	\$66.52	
	Steel cans	19.86	\$4.26	\$84.67									19.86	\$84.67	
	Glass	123.89	\$3.89	\$482.46									123.89	\$482.46	
	ONP	388.38	\$4.71	\$1,827.73									388.38	\$1,827.73	
	OCC	109.24	\$5.11	\$558.43									109.24	\$558.43	
	LPB	10.76	\$5.08	\$54.61									10.76	\$54.61	
	PET	14.07	\$5.00	\$70.37									14.07	\$70.37	
	HDPE	15.72	\$5.00	\$78.62									15.72	\$78.62	
	Batteries														
	Ferrous metal														
	Solvents and paints														
	Hazardous														
	Inert														
	Non ferrous														
	Oil							0.81	\$3.17	\$2.57				0.81	\$2.57
	Textiles														
	Tyres														
	Wood/timber offcuts														
	Food waste														
Mixed plastic	5.79	\$5.00	\$28.96										5.79	\$28.96	
Greenwaste				227.60	\$3.49	\$794.31							227.60	\$794.31	
Totals	699.30	\$4.52	\$3,252.36	227.60	\$3.73	\$794.31	0.81	\$4.02	\$2.57				927.71	\$4,049.24	

Local Government	Material	Kerbside			Vergeside			Dropoff			Resource Recovery			Totals	
		Tonnes of material	Rebate (\$/t)	Rebate (\$)	Tonnes of material	Rebate (\$/t)	Rebate (\$)	Tonnes of material	Rebate (\$/t)	Rebate (\$)	Tonnes of material	Rebate (\$/t)	Rebate (\$)	Tonnes of material	Rebate (\$)
Bayswater	Aluminium cans	22.56	\$5.59	\$126.08									22.56	\$126.08	
	Steel cans	36.37	\$4.11	\$149.58									36.37	\$149.58	
	Glass	187.87	\$3.74	\$703.29									187.87	\$703.29	
	ONP	1,291.24	\$4.56	\$5,882.08									1,291.24	\$5,882.08	
	OCC	217.63	\$4.96	\$1,079.72									217.63	\$1,079.72	
	LPB	1.49	\$4.92	\$7.34									1.49	\$7.34	
	PET	26.49	\$4.85	\$128.49									26.49	\$128.49	
	HDPE	32.58	\$4.85	\$158.03									32.58	\$158.03	
	Batteries														
	Ferrous metal	10.14	\$4.48	\$45.44				157.40	\$4.15	\$652.87				167.54	\$698.31
	Solvents and paints														
	Hazardous														
	Inert														
	Non ferrous														
	Oil														
	Textiles														
	Tyres														
	Wood/timber offcuts														
	Food waste														
Mixed plastic	11.70	\$4.85	\$56.75										11.70	\$56.75	
Greenwaste	2,800.16	\$3.91	\$10,947.67										2,800.16	\$10,947.67	
Totals	4,638.23	\$4.39	\$19,284.47				157.40	\$4.00	\$652.87				4,795.62	\$19,937.34	

Local Government	Material	Kerbside			Vergeside			Dropoff			Resource Recovery			Totals	
		Tonnes of material	Rebate (\$/t)	Rebate (\$)	Tonnes of material	Rebate (\$/t)	Rebate (\$)	Tonnes of material	Rebate (\$/t)	Rebate (\$)	Tonnes of material	Rebate (\$/t)	Rebate (\$)	Tonnes of material	Rebate (\$)
Belmont	Aluminium cans	12.50	\$5.85	\$73.06									12.50	\$73.06	
	Steel cans	20.13	\$4.37	\$87.99									20.13	\$87.99	
	Glass	103.97	\$4.00	\$416.09									103.97	\$416.09	
	ONP	714.80	\$4.81	\$3,440.78									714.80	\$3,440.78	
	OCC	120.41	\$5.22	\$628.47									120.41	\$628.47	
	LPB	0.82	\$5.18	\$4.27									0.82	\$4.27	
	PET	14.67	\$5.11	\$74.93									14.67	\$74.93	
	HDPE	18.00	\$5.11	\$91.96									18.00	\$91.96	
	Batteries							1.44	\$3.74	\$5.39				1.44	\$5.39
	Ferrous metal	5.60	\$4.74	\$26.56				15.14	\$4.41	\$66.71				20.74	\$93.27
	Solvents and paints														
	Hazardous														
	Inert														
	Non ferrous														
	Oil							1.53	\$3.41	\$5.22				1.53	\$5.22
	Textiles														
	Tyres														
	Wood/timber offcuts														
	Food waste														
Mixed plastic	6.48	\$5.11	\$33.12										6.48	\$33.12	
Greenwaste															
Totals	1,017.38	\$4.63	\$4,877.23				18.11	\$4.26	\$77.32				1,035.49	\$4,954.54	

Local Government	Material	Kerbside			Vergeside			Dropoff			Resource Recovery			Totals	
		Tonnes of material	Rebate (\$/t)	Rebate (\$)	Tonnes of material	Rebate (\$/t)	Rebate (\$)	Tonnes of material	Rebate (\$/t)	Rebate (\$)	Tonnes of material	Rebate (\$/t)	Rebate (\$)	Tonnes of material	Rebate (\$)
Boyup Brook	Aluminium cans	0.32	\$11.03	\$3.53				0.80	\$16.88	\$13.52				1.12	\$17.05
	Steel cans														
	Glass	2.30	\$9.19	\$21.14				8.50	\$15.03	\$127.72				10.80	\$148.85
	ONP	1.40	\$10.00	\$14.00				5.21	\$15.84	\$82.57				6.61	\$96.57
	OCC	2.10	\$10.41	\$21.85				9.09	\$16.25	\$147.72				11.19	\$169.57
	LPB														
	PET														
	HDPE														
	Batteries														
	Ferrous metal														
	Solvents and paints														
	Hazardous														
	Inert														
	Non ferrous														
	Oil														
	Textiles														
	Tyres														
Wood/timber offcuts															
Food waste															
Mixed plastic	0.08	\$10.30	\$0.82				0.50	\$16.14	\$8.06				0.58	\$8.89	
Greenwaste															
Totals		6.20	\$9.48	\$61.35			24.10	\$15.08	\$379.58				30.30	\$440.93	

Local Government	Material	Kerbside			Vergeside			Dropoff			Resource Recovery			Totals	
		Tonnes of material	Rebate (\$/t)	Rebate (\$)	Tonnes of material	Rebate (\$/t)	Rebate (\$)	Tonnes of material	Rebate (\$/t)	Rebate (\$)	Tonnes of material	Rebate (\$/t)	Rebate (\$)	Tonnes of material	Rebate (\$)
Bridgetown-Greenbushes	Aluminium cans							2.86	\$17.07	\$48.86				2.86	\$48.86
	Steel cans														
	Glass							36.00	\$15.23	\$548.16				36.00	\$548.16
	ONP														
	OCC							39.60	\$16.44	\$651.19				39.60	\$651.19
	LPB														
	PET														
	HDPE														
	Batteries														
	Ferrous metal							119.39	\$15.96	\$1,906.07				119.39	\$1,906.07
	Solvents and paints														
	Hazardous														
	Inert														
	Non ferrous														
	Oil							2.31	\$14.97	\$34.55				2.31	\$34.55
	Textiles														
	Tyres														
Wood/timber offcuts															
Food waste															
Mixed plastic															
Greenwaste															
Totals							200.16	\$15.26	\$3,188.83				200.16	\$3,188.83	

Local Government	Material	Kerbside			Vergeside			Dropoff			Resource Recovery			Totals	
		Tonnes of material	Rebate (\$/t)	Rebate (\$)	Tonnes of material	Rebate (\$/t)	Rebate (\$)	Tonnes of material	Rebate (\$/t)	Rebate (\$)	Tonnes of material	Rebate (\$/t)	Rebate (\$)	Tonnes of material	Rebate (\$)
Brookton	Aluminium cans	0.11	\$10.54	\$1.16										0.11	\$1.16
	Steel cans														
	Glass	2.00	\$8.69	\$17.39										2.00	\$17.39
	ONP														
	OCC														
	LPB														
	PET														
	HDPE														
	Batteries														
	Ferrous metal														
	Solvents and paints														
	Hazardous														
	Inert														
	Non ferrous														
	Oil														
	Textiles														
	Tyres														
Wood/timber offcuts															
Food waste															
Mixed plastic	0.27	\$9.80	\$2.61										0.27	\$2.61	
Greenwaste															
Totals		2.38	\$9.03	\$21.15									2.38	\$21.15	

Local Government	Material	Kerbside			Vergeside			Dropoff			Resource Recovery			Totals	
		Tonnes of material	Rebate (\$/t)	Rebate (\$)	Tonnes of material	Rebate (\$/t)	Rebate (\$)	Tonnes of material	Rebate (\$/t)	Rebate (\$)	Tonnes of material	Rebate (\$/t)	Rebate (\$)	Tonnes of material	Rebate (\$)
Broome	Aluminium cans	6.76	\$12.30	\$83.17										6.76	\$83.17
	Steel cans														
	Glass	74.92	\$10.46	\$783.59										74.92	\$783.59
	ONP	44.44	\$11.27	\$500.88										44.44	\$500.88
	OCC	87.56	\$11.68	\$1,022.41										87.56	\$1,022.41
	LPB	3.42	\$11.64	\$39.81										3.42	\$39.81
	PET	1.75	\$11.57	\$20.24										1.75	\$20.24
	HDPE														
	Batteries														
	Ferrous metal														
	Solvents and paints														
	Hazardous														
	Inert														
	Non ferrous														
	Oil							18.90	\$15.68	\$296.33				18.90	\$296.33
	Textiles														
	Tyres														
	Wood/timber offcuts														
Food waste															
Mixed plastic															
Greenwaste															
Totals		218.85	\$10.67	\$2,450.10			18.90	\$15.94	\$296.33				237.75	\$2,746.43	

Local Government	Material	Kerbside			Vergeside			Dropoff			Resource Recovery			Totals	
		Tonnes of material	Rebate (\$/t)	Rebate (\$)	Tonnes of material	Rebate (\$/t)	Rebate (\$)	Tonnes of material	Rebate (\$/t)	Rebate (\$)	Tonnes of material	Rebate (\$/t)	Rebate (\$)	Tonnes of material	Rebate (\$)
Bunbury	Aluminium cans	32.97	\$11.16	\$368.02										32.97	\$368.02
	Steel cans	42.86	\$9.69	\$415.17										42.86	\$415.17
	Glass	319.79	\$9.32	\$2,979.89										319.79	\$2,979.89
	ONP	780.33	\$10.13	\$7,904.76										780.33	\$7,904.76
	OCC	143.14	\$10.54	\$1,508.16										143.14	\$1,508.16
	LPB														
	PET	29.67	\$10.43	\$309.32										29.67	\$309.32
	HDPE	32.97	\$10.43	\$343.69										32.97	\$343.69
	Batteries														
	Ferrous metal				124.26	\$9.62	\$1,194.76							124.26	\$1,194.76
	Solvents and paints														
	Hazardous														
	Inert														
	Non ferrous														
	Oil							1.17	\$8.60	\$10.06				1.17	\$10.06
	Textiles														
	Tyres														
	Wood/timber offcuts														
Food waste															
Mixed plastic															
Greenwaste					305.74	\$4.01	\$1,224.95						305.74	\$1,224.95	
Totals		1,381.72	\$9.59	\$13,829.00	430.00	\$8.71	\$2,419.72	1.17	\$9.20	\$10.06			1,812.89	\$16,258.77	

Local Government	Material	Kerbside			Vergeside			Dropoff			Resource Recovery			Totals	
		Tonnes of material	Rebate (\$/t)	Rebate (\$)	Tonnes of material	Rebate (\$/t)	Rebate (\$)	Tonnes of material	Rebate (\$/t)	Rebate (\$)	Tonnes of material	Rebate (\$/t)	Rebate (\$)	Tonnes of material	Rebate (\$)
Busselton	Aluminium cans	29.20	\$11.40	\$332.88				0.30	\$10.94	\$3.25				29.50	\$336.13
	Steel cans	37.95	\$9.92	\$376.62										37.95	\$376.62
	Glass	283.37	\$9.56	\$2,707.62										283.37	\$2,707.62
	ONP	667.08	\$10.37	\$6,915.45										667.08	\$6,915.45
	OCC	151.25	\$10.77	\$1,629.41										151.25	\$1,629.41
	LPB														
	PET	26.26	\$10.66	\$279.98										26.26	\$279.98
	HDPE	29.21	\$10.66	\$311.44										29.21	\$311.44
	Batteries							4.92	\$9.17	\$45.10				4.92	\$45.10
	Ferrous metal							172.46	\$9.83	\$1,695.37				172.46	\$1,695.37
	Solvents and paints														
	Hazardous														
	Inert														
	Non ferrous							0.15	\$9.83	\$1.43				0.15	\$1.43
	Oil							1.44	\$8.83	\$12.72				1.44	\$12.72
	Textiles														
	Tyres														
	Wood/timber offcuts														
Food waste															
Mixed plastic															
Greenwaste															
Totals		1,224.32	\$9.83	\$12,553.40			179.27	\$9.44	\$1,757.86				1,403.59	\$14,311.26	

Local Government	Material	Kerbside			Vergeside			Dropoff			Resource Recovery			Totals	
		Tonnes of material	Rebate (\$/t)	Rebate (\$)	Tonnes of material	Rebate (\$/t)	Rebate (\$)	Tonnes of material	Rebate (\$/t)	Rebate (\$)	Tonnes of material	Rebate (\$/t)	Rebate (\$)	Tonnes of material	Rebate (\$)
Cambridge	Aluminium cans	10.30	\$5.85	\$60.22									10.30	\$60.22	
	Steel cans	16.62	\$4.37	\$72.64									16.62	\$72.64	
	Glass	85.78	\$4.00	\$343.28									85.78	\$343.28	
	ONP	591.15	\$4.81	\$2,845.60									591.15	\$2,845.60	
	OCC	99.33	\$5.22	\$518.46									99.33	\$518.46	
	LPB	0.67	\$5.18	\$3.47									0.67	\$3.47	
	PET	12.11	\$5.11	\$61.87									12.11	\$61.87	
	HDPE	14.89	\$5.11	\$76.07									14.89	\$76.07	
	Batteries														
	Ferrous metal	4.64	\$4.74	\$21.99										4.64	\$21.99
	Solvents and paints														
	Hazardous														
	Inert														
	Non ferrous														
	Oil														
	Textiles														
	Tyres														
	Wood/timber offcuts														
Food waste															
Mixed plastic	5.35	\$5.11	\$27.33										5.35	\$27.33	
Greenwaste				295.64	\$3.73	\$1,101.76							295.64	\$1,101.76	
Totals	840.84	\$4.63	\$4,030.94	295.64	\$3.97	\$1,101.76							1,136.48	\$5,132.70	

Local Government	Material	Kerbside			Vergeside			Dropoff			Resource Recovery			Totals	
		Tonnes of material	Rebate (\$/t)	Rebate (\$)	Tonnes of material	Rebate (\$/t)	Rebate (\$)	Tonnes of material	Rebate (\$/t)	Rebate (\$)	Tonnes of material	Rebate (\$/t)	Rebate (\$)	Tonnes of material	Rebate (\$)
Canning	Aluminium cans	26.25	\$5.87	\$154.04									26.25	\$154.04	
	Steel cans	66.94	\$4.39	\$294.03									66.94	\$294.03	
	Glass	328.37	\$4.02	\$1,321.17									328.37	\$1,321.17	
	ONP	2,054.62	\$4.84	\$9,934.47									2,054.62	\$9,934.47	
	OCC	191.27	\$5.24	\$1,002.46									191.27	\$1,002.46	
	LPB														
	PET	29.79	\$5.13	\$152.83									29.79	\$152.83	
	HDPE	31.63	\$5.13	\$162.27									31.63	\$162.27	
	Batteries	1.49	\$4.10	\$6.10				7.30	\$3.76	\$27.47				8.79	\$33.58
	Ferrous metal				189.10	\$4.45	\$841.36	100.86	\$4.43	\$446.58				289.96	\$1,287.95
	Solvents and paints														
	Hazardous														
	Inert														
	Non ferrous														
	Oil	0.14	\$3.77	\$0.53				7.13	\$3.43	\$24.46				7.27	\$24.99
	Textiles	42.24	\$3.65	\$154.36										42.24	\$154.36
	Tyres														
	Wood/timber offcuts														
Food waste															
Mixed plastic															
Greenwaste				2,000.68	\$3.88	\$7,757.38							2,000.68	\$7,757.38	
Totals	2,772.74	\$4.65	\$13,182.27	2,189.78	\$4.00	\$8,598.74	115.29	\$4.28	\$498.52				5,077.81	\$22,279.54	

Local Government	Material	Kerbside			Vergeside			Dropoff			Resource Recovery			Totals	
		Tonnes of material	Rebate (\$/t)	Rebate (\$)	Tonnes of material	Rebate (\$/t)	Rebate (\$)	Tonnes of material	Rebate (\$/t)	Rebate (\$)	Tonnes of material	Rebate (\$/t)	Rebate (\$)	Tonnes of material	Rebate (\$)
Capel	Aluminium cans	10.21	\$11.42	\$116.61									10.21	\$116.61	
	Steel cans	13.27	\$9.95	\$131.98									13.27	\$131.98	
	Glass	99.18	\$9.58	\$949.81									99.18	\$949.81	
	ONP	233.47	\$10.39	\$2,425.37									233.47	\$2,425.37	
	OCC	52.93	\$10.79	\$571.34									52.93	\$571.34	
	LPB														
	PET	9.20	\$10.68	\$98.29									9.20	\$98.29	
	HDPE	10.21	\$10.68	\$109.08									10.21	\$109.08	
	Batteries														
	Ferrous metal				32.80	\$9.87	\$323.84	53.74	\$15.66	\$841.74				86.54	\$1,165.59
	Solvents and paints														
	Hazardous														
	Inert														
	Non ferrous														
	Oil														
	Textiles														
	Tyres														
	Wood/timber offcuts														
Food waste															
Mixed plastic															
Greenwaste				32.80	\$4.26	\$139.89							32.80	\$139.89	
Totals	428.47	\$9.85	\$4,402.47	65.60	\$8.97	\$463.73	53.74	\$14.98	\$841.74				547.81	\$5,707.94	

Local Government	Material	Kerbside			Vergeside			Dropoff			Resource Recovery			Totals	
		Tonnes of material	Rebate (\$/t)	Rebate (\$)	Tonnes of material	Rebate (\$/t)	Rebate (\$)	Tonnes of material	Rebate (\$/t)	Rebate (\$)	Tonnes of material	Rebate (\$/t)	Rebate (\$)	Tonnes of material	Rebate (\$)
Chittering	Aluminium cans							0.68	\$16.43	\$11.17				0.68	\$11.17
	Steel cans														
	Glass							11.90	\$14.58	\$173.50				11.90	\$173.50
	ONP							12.97	\$15.39	\$199.63				12.97	\$199.63
	OCC														
	LPB														
	PET														
	HDPE														
	Batteries														
	Ferrous metal							180.83	\$15.32	\$2,770.11				180.83	\$2,770.11
	Solvents and paints														
	Hazardous														
	Inert														
	Non ferrous							2.48	\$15.32	\$37.99				2.48	\$37.99
	Oil							4.58	\$14.32	\$65.61				4.58	\$65.61
	Textiles														
	Tyres														
Wood/timber offcuts															
Food waste															
Mixed plastic															
Greenwaste															
Totals							213.44	\$14.65	\$3,258.01		\$8.72	\$0.00	213.44	\$3,258.01	

Local Government	Material	Kerbside			Vergeside			Dropoff			Resource Recovery			Totals	
		Tonnes of material	Rebate (\$/t)	Rebate (\$)	Tonnes of material	Rebate (\$/t)	Rebate (\$)	Tonnes of material	Rebate (\$/t)	Rebate (\$)	Tonnes of material	Rebate (\$/t)	Rebate (\$)	Tonnes of material	Rebate (\$)
Claremont	Aluminium cans	7.79	\$5.48	\$42.68									7.79	\$42.68	
	Steel cans	5.70	\$4.00	\$22.83									5.70	\$22.83	
	Glass	91.76	\$3.64	\$333.65									91.76	\$333.65	
	ONP	391.73	\$4.45	\$1,742.34									391.73	\$1,742.34	
	OCC	53.88	\$4.85	\$261.50									53.88	\$261.50	
	LPB	7.51	\$4.82	\$36.16									7.51	\$36.16	
	PET	14.11	\$4.74	\$66.93									14.11	\$66.93	
	HDPE	15.29	\$4.74	\$72.54									15.29	\$72.54	
	Batteries														
	Ferrous metal				9.38	\$3.93	\$36.89							9.38	\$36.89
	Solvents and paints														
	Hazardous														
	Inert														
	Non ferrous														
	Oil							34.77	\$2.91	\$101.35				34.77	\$101.35
	Textiles														
	Tyres														
Wood/timber offcuts															
Food waste															
Mixed plastic															
Greenwaste				394.38	\$3.40	\$1,342.41							394.38	\$1,342.41	
Totals		587.78	\$4.26	\$2,578.63	403.76	\$3.49	\$1,379.30	34.77	\$3.77	\$101.35	0.00	\$3.59	\$0.00	1,026.31	\$4,059.28

Local Government	Material	Kerbside			Vergeside			Dropoff			Resource Recovery			Totals	
		Tonnes of material	Rebate (\$/t)	Rebate (\$)	Tonnes of material	Rebate (\$/t)	Rebate (\$)	Tonnes of material	Rebate (\$/t)	Rebate (\$)	Tonnes of material	Rebate (\$/t)	Rebate (\$)	Tonnes of material	Rebate (\$)
Cockburn	Aluminium cans	26.33	\$6.13	\$161.31									26.33	\$161.31	
	Steel cans														
	Glass	329.43	\$4.28	\$1,410.53									329.43	\$1,410.53	
	ONP	2,061.21	\$5.09	\$10,498.72									2,061.21	\$10,498.72	
	OCC	191.89	\$5.50	\$1,055.27				18.92	\$5.17	\$97.74			210.81	\$1,153.01	
	LPB														
	PET	29.89	\$5.39	\$161.07									29.89	\$161.07	
	HDPE	31.73	\$5.39	\$170.98									31.73	\$170.98	
	Batteries	1.49	\$4.36	\$6.49				34.62	\$4.02	\$139.24			36.11	\$145.73	
	Ferrous metal	67.16	\$5.02	\$337.12				61.62	\$4.69	\$288.75			128.78	\$625.88	
	Solvents and paints														
	Hazardous														
	Inert														
	Non ferrous														
	Oil	0.14	\$4.02	\$0.56				19.74	\$3.69	\$72.84				19.88	\$73.40
	Textiles														
	Tyres														
Wood/timber offcuts							3.86	\$3.95	\$15.24				3.86	\$15.24	
Food waste															
Mixed plastic	42.37	\$5.39	\$228.32									42.37	\$228.32		
Greenwaste				507.92	\$4.01	\$2,034.99	10.50	\$3.98	\$41.84			518.42	\$2,076.83		
Totals		2,781.64	\$4.91	\$14,030.37	507.92	\$4.25	\$2,034.99	149.26	\$4.54	\$655.65			3,438.82	\$16,721.00	

Local Government	Material	Kerbside			Vergeside			Dropoff			Resource Recovery			Totals	
		Tonnes of material	Rebate (\$/t)	Rebate (\$)	Tonnes of material	Rebate (\$/t)	Rebate (\$)	Tonnes of material	Rebate (\$/t)	Rebate (\$)	Tonnes of material	Rebate (\$/t)	Rebate (\$)	Tonnes of material	Rebate (\$)
Corrigin	Aluminium cans	0.41	\$11.21	\$4.59									0.41	\$4.59	
	Steel cans	0.29	\$9.73	\$2.82									0.29	\$2.82	
	Glass	4.08	\$9.36	\$38.19									4.08	\$38.19	
	ONP	12.41	\$10.17	\$126.25									12.41	\$126.25	
	OCC	2.76	\$10.58	\$29.20									2.76	\$29.20	
	LPB	0.07	\$10.54	\$0.74									0.07	\$0.74	
	PET	0.41	\$10.47	\$4.29									0.41	\$4.29	
	HDPE	0.51	\$10.47	\$5.34									0.51	\$5.34	
	Batteries														
	Ferrous metal														
	Solvents and paints														
	Hazardous														
	Inert														
	Non ferrous														
	Oil														
	Textiles														
	Tyres														
	Wood/timber offcuts														
	Food waste														
	Mixed plastic														
Greenwaste															
Totals		20.94	\$9.65	\$211.43									20.94	\$211.43	

Local Government	Material	Kerbside			Vergeside			Dropoff			Resource Recovery			Totals	
		Tonnes of material	Rebate (\$/t)	Rebate (\$)	Tonnes of material	Rebate (\$/t)	Rebate (\$)	Tonnes of material	Rebate (\$/t)	Rebate (\$)	Tonnes of material	Rebate (\$/t)	Rebate (\$)	Tonnes of material	Rebate (\$)
Cottesloe	Aluminium cans	8.22	\$5.46	\$44.86									8.22	\$44.86	
	Steel cans	15.86	\$3.98	\$63.17									15.86	\$63.17	
	Glass	87.30	\$3.61	\$315.54									87.30	\$315.54	
	ONP	270.18	\$4.43	\$1,195.88									270.18	\$1,195.88	
	OCC	62.59	\$4.83	\$302.42									62.59	\$302.42	
	LPB	9.51	\$4.80	\$45.62									9.51	\$45.62	
	PET	9.06	\$4.72	\$42.79									9.06	\$42.79	
	HDPE	11.90	\$4.72	\$56.18									11.90	\$56.18	
	Batteries														
	Ferrous metal														
	Solvents and paints														
	Hazardous														
	Inert														
	Non ferrous				7.00	\$3.91	\$27.38							7.00	\$27.38
	Oil														
	Textiles														
	Tyres														
	Wood/timber offcuts														
	Food waste														
	Mixed plastic														
Greenwaste				247.76	\$3.34	\$827.34							247.76	\$827.34	
Totals		474.62	\$4.24	\$2,066.46	254.76	\$3.47	\$854.72						729.38	\$2,921.17	

Local Government	Material	Kerbside			Vergeside			Dropoff			Resource Recovery			Totals	
		Tonnes of material	Rebate (\$/t)	Rebate (\$)	Tonnes of material	Rebate (\$/t)	Rebate (\$)	Tonnes of material	Rebate (\$/t)	Rebate (\$)	Tonnes of material	Rebate (\$/t)	Rebate (\$)	Tonnes of material	Rebate (\$)
Cuballing	Aluminium cans														
	Steel cans														
	Glass														
	ONP														
	OCC														
	LPB														
	PET														
	HDPE														
	Batteries														
	Ferrous metal														
	Solvents and paints														
	Hazardous														
	Inert														
	Non ferrous							45.55	\$15.84	\$721.30				45.55	\$721.30
	Oil														
	Textiles														
	Tyres														
	Wood/timber offcuts														
	Food waste														
	Mixed plastic														
Greenwaste															
Totals							45.55	\$15.14	\$721.30				45.55	\$721.30	

Local Government	Material	Kerbside			Vergeside			Dropoff			Resource Recovery			Totals	
		Tonnes of material	Rebate (\$/t)	Rebate (\$)	Tonnes of material	Rebate (\$/t)	Rebate (\$)	Tonnes of material	Rebate (\$/t)	Rebate (\$)	Tonnes of material	Rebate (\$/t)	Rebate (\$)	Tonnes of material	Rebate (\$)
Cunderdin	Aluminium cans	0.50	\$11.25	\$5.58									0.50	\$5.58	
	Steel cans	0.35	\$9.77	\$3.43									0.35	\$3.43	
	Glass	4.93	\$9.40	\$46.32									4.93	\$46.32	
	ONP	14.94	\$10.22	\$152.60									14.94	\$152.60	
	OCC	3.33	\$10.62	\$35.41									3.33	\$35.41	
	LPB	0.09	\$10.59	\$0.95									0.09	\$0.95	
	PET	0.50	\$10.51	\$5.21									0.50	\$5.21	
	HDPE	0.58	\$10.51	\$6.11									0.58	\$6.11	
	Batteries														
	Ferrous metal														
	Solvents and paints														
	Hazardous														
	Inert														
	Non ferrous														
	Oil	1.15	\$9.15	\$10.55										1.15	\$10.55
	Textiles														
	Tyres														
	Wood/timber offcuts														
Food waste															
Mixed plastic															
Greenwaste															
Totals		26.36	\$9.69	\$266.17									26.36	\$266.17	

Local Government	Material	Kerbside			Vergeside			Dropoff			Resource Recovery			Totals	
		Tonnes of material	Rebate (\$/t)	Rebate (\$)	Tonnes of material	Rebate (\$/t)	Rebate (\$)	Tonnes of material	Rebate (\$/t)	Rebate (\$)	Tonnes of material	Rebate (\$/t)	Rebate (\$)	Tonnes of material	Rebate (\$)
Dalwallinu	Aluminium cans	0.74	\$11.25	\$8.32									0.74	\$8.32	
	Steel cans	0.52	\$9.77	\$5.08									0.52	\$5.08	
	Glass	7.29	\$9.40	\$68.56									7.29	\$68.56	
	ONP	22.14	\$10.22	\$226.19									22.14	\$226.19	
	OCC	4.94	\$10.62	\$52.47									4.94	\$52.47	
	LPB	0.14	\$10.59	\$1.48									0.14	\$1.48	
	PET	0.74	\$10.51	\$7.78									0.74	\$7.78	
	HDPE	0.87	\$10.51	\$9.14									0.87	\$9.14	
	Batteries														
	Ferrous metal														
	Solvents and paints														
	Hazardous														
	Inert														
	Non ferrous														
	Oil														
	Textiles														
	Tyres														
	Wood/timber offcuts														
Food waste															
Mixed plastic															
Greenwaste															
Totals		37.38	\$9.69	\$379.03									37.38	\$379.03	

Local Government	Material	Kerbside			Vergeside			Dropoff			Resource Recovery			Totals	
		Tonnes of material	Rebate (\$/t)	Rebate (\$)	Tonnes of material	Rebate (\$/t)	Rebate (\$)	Tonnes of material	Rebate (\$/t)	Rebate (\$)	Tonnes of material	Rebate (\$/t)	Rebate (\$)	Tonnes of material	Rebate (\$)
Dandaragan	Aluminium cans						1.80	\$16.81	\$30.26				1.80	\$30.26	
	Steel cans														
	Glass						18.09	\$14.97	\$270.78				18.09	\$270.78	
	ONP						8.52	\$15.78	\$134.45				8.52	\$134.45	
	OCC						25.81	\$16.19	\$417.76				25.81	\$417.76	
	LPB														
	PET						0.74	\$16.08	\$11.82				0.74	\$11.82	
	HDPE														
	Batteries														
	Ferrous metal						76.37	\$15.71	\$1,199.49				76.37	\$1,199.49	
	Solvents and paints														
	Hazardous														
	Inert														
	Non ferrous														
	Oil						5.50	\$14.71	\$80.91				5.50	\$80.91	
	Textiles														
	Tyres														
	Wood/timber offcuts														
Food waste															
Mixed plastic						0.93	\$16.08	\$14.95				0.93	\$14.95		
Greenwaste															
Totals							137.76	\$15.02	\$2,160.41				137.76	\$2,160.41	

Local Government	Material	Kerbside			Vergeside			Dropoff			Resource Recovery			Totals	
		Tonnes of material	Rebate (\$/t)	Rebate (\$)	Tonnes of material	Rebate (\$/t)	Rebate (\$)	Tonnes of material	Rebate (\$/t)	Rebate (\$)	Tonnes of material	Rebate (\$/t)	Rebate (\$)	Tonnes of material	Rebate (\$)
Dardanup	Aluminium cans	8.98	\$11.25	\$101.02										8.98	\$101.02
	Steel cans	11.71	\$9.77	\$114.45										11.71	\$114.45
	Glass	87.32	\$9.40	\$821.19										87.32	\$821.19
	ONP	192.31	\$10.22	\$1,964.67										192.31	\$1,964.67
	OCC	40.15	\$10.62	\$426.47										40.15	\$426.47
	LPB														
	PET	8.11	\$10.51	\$85.25										8.11	\$85.25
	HDPE	8.99	\$10.51	\$94.50										8.99	\$94.50
	Batteries														
	Ferrous metal	0.99	\$10.14	\$10.04										0.99	\$10.04
	Solvents and paints														
	Hazardous														
	Inert														
	Non ferrous														
	Oil														
	Textiles														
	Tyres														
	Wood/timber offcuts														
Food waste															
Mixed plastic															
Greenwaste															
Totals		358.56	\$9.69	\$3,617.59										358.56	\$3,617.59

Local Government	Material	Kerbside			Vergeside			Dropoff			Resource Recovery			Totals	
		Tonnes of material	Rebate (\$/t)	Rebate (\$)	Tonnes of material	Rebate (\$/t)	Rebate (\$)	Tonnes of material	Rebate (\$/t)	Rebate (\$)	Tonnes of material	Rebate (\$/t)	Rebate (\$)	Tonnes of material	Rebate (\$)
Denmark	Aluminium cans	1.23	\$11.79	\$14.50				0.54	\$17.78	\$9.60				1.77	\$24.10
	Steel cans	3.03	\$10.31	\$31.24				0.11	\$16.31	\$1.79				3.14	\$33.04
	Glass	27.82	\$9.94	\$276.60				72.74	\$15.94	\$1,159.25				100.56	\$1,435.85
	ONP	73.17	\$10.75	\$786.89				2.75	\$16.75	\$46.06				75.92	\$832.95
	OCC	33.94	\$11.16	\$378.77				1.03	\$17.15	\$17.67				34.97	\$396.44
	LPB	0.53	\$11.12	\$5.90				0.02	\$17.12	\$0.34				0.55	\$6.24
	PET	2.13	\$11.05	\$23.54				0.08	\$17.04	\$1.36				2.21	\$24.90
	HDPE	3.14	\$11.05	\$34.70				0.12	\$17.04	\$2.05				3.26	\$36.74
	Batteries							1.96	\$16.01	\$31.38				1.96	\$31.38
	Ferrous metal							77.58	\$16.67	\$1,293.64				77.58	\$1,293.64
	Solvents and paints							0.10	\$16.01	\$1.60				0.10	\$1.60
	Hazardous														
	Inert							129.77	\$15.94	\$2,068.13				129.77	\$2,068.13
	Non ferrous							12.03	\$16.67	\$200.60				12.03	\$200.60
	Oil							5.84	\$15.68	\$91.56				5.84	\$91.56
	Textiles							0.24	\$15.57	\$3.74				0.24	\$3.74
	Tyres														
	Wood/timber offcuts							40.26	\$15.94	\$641.62				40.26	\$641.62
Food waste															
Mixed plastic	2.02	\$11.05	\$22.32				0.08	\$17.04	\$1.36				2.10	\$23.68	
Greenwaste				5.76	\$4.24	\$24.44							5.76	\$24.44	
Totals		147.01	\$10.19	\$1,574.45	5.76	\$4.24	\$24.44	345.25	\$15.94	\$5,571.75			498.02	\$7,170.65	

Local Government	Material	Kerbside			Vergeside			Dropoff			Resource Recovery			Totals	
		Tonnes of material	Rebate (\$/t)	Rebate (\$)	Tonnes of material	Rebate (\$/t)	Rebate (\$)	Tonnes of material	Rebate (\$/t)	Rebate (\$)	Tonnes of material	Rebate (\$/t)	Rebate (\$)	Tonnes of material	Rebate (\$)
Donnybrook-Balingup	Aluminium cans	2.83	\$11.27	\$31.90				0.56	\$17.14	\$9.63				3.39	\$41.53
	Steel cans	3.66	\$9.79	\$35.85										3.66	\$35.85
	Glass	27.34	\$9.43	\$257.70				7.60	\$15.29	\$116.21				34.94	\$373.92
	ONP	64.36	\$10.24	\$658.90				21.46	\$16.10	\$345.62				85.82	\$1,004.51
	OCC	14.59	\$10.64	\$155.29				155.74	\$16.51	\$2,571.08				170.33	\$2,726.37
	LPB														
	PET	2.54	\$10.53	\$26.75										2.54	\$26.75
	HDPE	2.83	\$10.53	\$29.81										2.83	\$29.81
	Batteries														
	Ferrous metal							11.19	\$16.03	\$179.43				11.19	\$179.43
	Solvents and paints							81.13	\$15.36	\$1,246.56				81.13	\$1,246.56
	Hazardous														
	Inert														
	Non ferrous							5.47	\$16.03	\$87.65				5.47	\$87.65
	Oil														
	Textiles														
	Tyres														
	Wood/timber offcuts														
Food waste															
Mixed plastic															
Greenwaste															
Totals		118.15	\$9.71	\$1,196.20				283.16	\$15.33	\$4,556.18			401.31	\$5,752.38	

Local Government	Material	Kerbside			Vergeside			Dropoff			Resource Recovery			Totals	
		Tonnes of material	Rebate (\$/t)	Rebate (\$)	Tonnes of material	Rebate (\$/t)	Rebate (\$)	Tonnes of material	Rebate (\$/t)	Rebate (\$)	Tonnes of material	Rebate (\$/t)	Rebate (\$)	Tonnes of material	Rebate (\$)
Eastern Metropolitan Regional Council	Aluminium cans							0.64	\$5.97	\$3.82				0.64	\$3.82
	Steel cans														
	Glass							13.30	\$4.12	\$54.80				13.30	\$54.80
	ONP							7.81	\$4.93	\$38.52				7.81	\$38.52
	OCC							6.13	\$5.34	\$32.72				6.13	\$32.72
	LPB														
	PET														
	HDPE														
	Batteries							13.50	\$4.19	\$56.62				13.50	\$56.62
	Ferrous metal							80.02	\$4.86	\$388.76				80.02	\$388.76
	Solvents and paints							4.52	\$4.19	\$18.96				4.52	\$18.96
	Hazardous							0.01	\$6.11	\$0.07				0.01	\$0.07
	Inert							0.10	\$4.12	\$0.41				0.10	\$0.41
	Non ferrous														
	Oil							8.32	\$3.86	\$32.13				8.32	\$32.13
	Textiles							0.64	\$3.75	\$2.40				0.64	\$2.40
	Tyres														
	Wood/timber offcuts														
	Food waste														
	Mixed plastic							2.50	\$5.23	\$13.07				2.50	\$13.07
Greenwaste							7.74	\$4.16	\$32.18				7.74	\$32.18	
Totals							145.23	\$4.71	\$674.45				145.23	\$674.45	

Local Government	Material	Kerbside			Vergeside			Dropoff			Resource Recovery			Totals	
		Tonnes of material	Rebate (\$/t)	Rebate (\$)	Tonnes of material	Rebate (\$/t)	Rebate (\$)	Tonnes of material	Rebate (\$/t)	Rebate (\$)	Tonnes of material	Rebate (\$/t)	Rebate (\$)	Tonnes of material	Rebate (\$)
Esperance	Aluminium cans	5.98	\$12.30	\$73.58									5.98	\$73.58	
	Steel cans	13.43	\$10.83	\$145.42									13.43	\$145.42	
	Glass	67.16	\$10.46	\$702.43									67.16	\$702.43	
	ONP	171.57	\$11.27	\$1,933.74									171.57	\$1,933.74	
	OCC	137.76	\$11.68	\$1,608.58									137.76	\$1,608.58	
	LPB														
	PET	7.23	\$11.57	\$83.62									7.23	\$83.62	
	HDPE	8.87	\$11.57	\$102.59											
	Batteries							6.06	\$11.23	\$68.07				14.93	\$170.66
	Ferrous metal							7.80	\$10.20	\$79.55				7.80	\$79.55
	Solvents and paints							51.97	\$10.86	\$564.57				51.97	\$564.57
	Hazardous														
	Inert														
	Non ferrous							1.20	\$10.86	\$13.04				1.20	\$13.04
	Oil							3.83	\$9.87	\$37.79				3.83	\$37.79
	Textiles														
	Tyres														
	Wood/timber offcuts														
	Food waste														
	Mixed plastic	11.70	\$11.57	\$135.32										11.70	\$135.32
Greenwaste															
Totals	423.70	\$10.67	\$4,785.28				70.86	\$10.42	\$763.02				494.56	\$5,548.30	

Local Government	Material	Kerbside			Vergeside			Dropoff			Resource Recovery			Totals	
		Tonnes of material	Rebate (\$/t)	Rebate (\$)	Tonnes of material	Rebate (\$/t)	Rebate (\$)	Tonnes of material	Rebate (\$/t)	Rebate (\$)	Tonnes of material	Rebate (\$/t)	Rebate (\$)	Tonnes of material	Rebate (\$)
Fremantle	Aluminium cans	10.65	\$5.59	\$59.52									10.65	\$59.52	
	Steel cans	27.16	\$4.11	\$111.70									27.16	\$111.70	
	Glass	133.23	\$3.74	\$498.76									133.23	\$498.76	
	ONP	833.59	\$4.56	\$3,797.32									833.59	\$3,797.32	
	OCC	77.60	\$4.96	\$384.99									77.60	\$384.99	
	LPB														
	PET	12.09	\$4.85	\$58.64									12.09	\$58.64	
	HDPE	12.83	\$4.85	\$62.23									12.83	\$62.23	
	Batteries	0.61	\$3.82	\$2.33									0.61	\$2.33	
	Ferrous metal														
	Solvents and paints														
	Hazardous														
	Inert														
	Non ferrous														
	Oil	0.06	\$3.49	\$0.21									0.06	\$0.21	
	Textiles														
	Tyres														
	Wood/timber offcuts														
	Food waste														
	Mixed plastic	17.14	\$4.85	\$83.14										17.14	\$83.14
Greenwaste				529.98	\$3.51	\$1,861.01							529.98	\$1,861.01	
Totals	1,124.96	\$4.37	\$5,058.84	529.98	\$3.72	\$1,861.01							1,654.94	\$6,919.85	

Local Government	Material	Kerbside			Vergeside			Dropoff			Resource Recovery			Totals	
		Tonnes of material	Rebate (\$/t)	Rebate (\$)	Tonnes of material	Rebate (\$/t)	Rebate (\$)	Tonnes of material	Rebate (\$/t)	Rebate (\$)	Tonnes of material	Rebate (\$/t)	Rebate (\$)	Tonnes of material	Rebate (\$)
Geraldton Greenough Regional Council	Aluminium cans							0.36	\$11.39	\$4.08				0.36	\$4.08
	Steel cans														
	Glass														
	ONP							109.80	\$10.36	\$1,137.10				109.80	\$1,137.10
	OCC														
	LPB														
	PET														
	HDPE														
	Batteries							2.97	\$9.62	\$28.57				2.97	\$28.57
	Ferrous metal							89.17	\$10.28	\$916.87				89.17	\$916.87
	Solvents and paints														
	Hazardous														
	Inert														
	Non ferrous							10.05	\$10.28	\$103.34				10.05	\$103.34
	Oil							14.12	\$9.29	\$131.12				14.12	\$131.12
	Textiles														
	Tyres														
	Wood/timber offcuts														
Food waste															
Mixed plastic															
Greenwaste							762.53	\$4.29	\$3,268.47				762.53	\$3,268.47	
Totals							989.00	\$9.87	\$5,589.53				989.00	\$5,589.53	

Local Government	Material	Kerbside			Vergeside			Dropoff			Resource Recovery			Totals	
		Tonnes of material	Rebate (\$/t)	Rebate (\$)	Tonnes of material	Rebate (\$/t)	Rebate (\$)	Tonnes of material	Rebate (\$/t)	Rebate (\$)	Tonnes of material	Rebate (\$/t)	Rebate (\$)	Tonnes of material	Rebate (\$)
Goomalling	Aluminium cans	0.78	\$10.52	\$8.24				0.33	\$16.49	\$5.49				1.12	\$13.73
	Steel cans														
	Glass	8.14	\$8.67	\$70.62				14.84	\$14.65	\$217.38				22.99	\$288.00
	ONP	12.33	\$9.48	\$116.94				3.46	\$15.46	\$53.50				15.79	\$170.44
	OCC	11.19	\$9.89	\$110.68				19.56	\$15.86	\$310.31				30.75	\$421.00
	LPB														
	PET	0.27	\$9.78	\$2.61										0.27	\$2.61
	HDPE	0.85	\$9.78	\$8.34										0.85	\$8.34
	Batteries														
	Ferrous metal							66.86	\$15.38	\$1,028.54				66.86	\$1,028.54
	Solvents and paints														
	Hazardous														
	Inert														
	Non ferrous							0.08	\$15.38	\$1.18				0.08	\$1.18
	Oil							3.10	\$14.39	\$44.63				3.10	\$44.63
	Textiles														
	Tyres														
	Wood/timber offcuts														
Food waste															
Mixed plastic							0.11	\$15.75	\$1.76				0.11	\$1.76	
Greenwaste															
Totals		33.57	\$9.00	\$317.43			108.35	\$14.71	\$1,662.80				141.92	\$1,980.23	

Local Government	Material	Kerbside			Vergeside			Dropoff			Resource Recovery			Totals	
		Tonnes of material	Rebate (\$/t)	Rebate (\$)	Tonnes of material	Rebate (\$/t)	Rebate (\$)	Tonnes of material	Rebate (\$/t)	Rebate (\$)	Tonnes of material	Rebate (\$/t)	Rebate (\$)	Tonnes of material	Rebate (\$)
Gosnells	Aluminium cans	38.91	\$5.87	\$228.34										38.91	\$228.34
	Steel cans	62.71	\$4.39	\$275.45										62.71	\$275.45
	Glass	323.97	\$4.02	\$1,303.47										323.97	\$1,303.47
	ONP	2,227.69	\$4.84	\$10,771.29										2,227.69	\$10,771.29
	OCC	375.26	\$5.24	\$1,966.76										375.26	\$1,966.76
	LPB	2.56	\$5.20	\$13.32										2.56	\$13.32
	PET	45.70	\$5.13	\$234.46										45.70	\$234.46
	HDPE	56.18	\$5.13	\$288.22										56.18	\$288.22
	Batteries														
	Ferrous metal	17.50	\$4.76	\$83.32										17.50	\$83.32
	Solvents and paints														
	Hazardous														
	Inert														
	Non ferrous														
	Oil							2.70	\$3.43	\$9.27				2.70	\$9.27
	Textiles														
	Tyres														
	Wood/timber offcuts														
Food waste															
Mixed plastic	20.17	\$5.13	\$103.48										20.17	\$103.48	
Greenwaste				827.60	\$3.75	\$3,102.03							827.60	\$3,102.03	
Totals		3,170.65	\$4.65	\$15,268.12	831.10	\$3.99	\$3,117.61	2.70	\$4.28	\$9.27			4,004.45	\$18,394.99	

Local Government	Material	Kerbside			Vergeside			Dropoff			Resource Recovery			Totals	
		Tonnes of material	Rebate (\$/t)	Rebate (\$)	Tonnes of material	Rebate (\$/t)	Rebate (\$)	Tonnes of material	Rebate (\$/t)	Rebate (\$)	Tonnes of material	Rebate (\$/t)	Rebate (\$)	Tonnes of material	Rebate (\$)
Harvey	Aluminium cans	19.43	\$10.75	\$208.96				0.30	\$10.42	\$3.15				19.73	\$212.10
	Steel cans	25.26	\$9.28	\$234.37										25.26	\$234.37
	Glass	188.49	\$8.91	\$1,679.32										188.49	\$1,679.32
	ONP	457.45	\$9.72	\$4,446.92										457.45	\$4,446.92
	OCC	86.81	\$10.13	\$879.12										86.81	\$879.12
	LPB														
	PET	17.49	\$10.02	\$175.18										17.49	\$175.18
	HDPE	19.43	\$10.02	\$194.62										19.43	\$194.62
	Batteries														
	Ferrous metal							132.93	\$9.31	\$1,238.07				132.93	\$1,238.07
	Solvents and paints														
	Hazardous														
	Inert														
	Non ferrous							1.36	\$9.31	\$12.63				1.36	\$12.63
	Oil														
	Textiles														
	Tyres														
	Wood/timber offcuts														
Food waste															
Mixed plastic															
Greenwaste															
Totals		814.36	\$9.23	\$7,818.49				134.59	\$8.95	\$1,253.85				948.95	\$9,072.34

Local Government	Material	Kerbside			Vergeside			Dropoff			Resource Recovery			Totals	
		Tonnes of material	Rebate (\$/t)	Rebate (\$)	Tonnes of material	Rebate (\$/t)	Rebate (\$)	Tonnes of material	Rebate (\$/t)	Rebate (\$)	Tonnes of material	Rebate (\$/t)	Rebate (\$)	Tonnes of material	Rebate (\$)
Irwin	Aluminium cans							0.05	\$17.20	\$0.85				0.05	\$0.85
	Steel cans														
	Glass														
	ONP							11.95	\$16.17	\$193.22				11.95	\$193.22
	OCC							5.32	\$16.57	\$88.17				5.32	\$88.17
	LPB														
	PET														
	HDPE														
	Batteries							2.05	\$15.43	\$31.66				2.05	\$31.66
	Ferrous metal							0.51	\$16.09	\$8.26				0.51	\$8.26
	Solvents and paints														
	Hazardous														
	Inert														
	Non ferrous							0.59	\$16.09	\$9.41				0.59	\$9.41
	Oil							6.84	\$15.10	\$103.27				6.84	\$103.27
	Textiles														
	Tyres														
	Wood/timber offcuts														
Food waste															
Mixed plastic															
Greenwaste															
Totals							27.31	\$15.39	\$434.84				27.31	\$434.84	

Local Government	Material	Kerbside			Vergeside			Dropoff			Resource Recovery			Totals	
		Tonnes of material	Rebate (\$/t)	Rebate (\$)	Tonnes of material	Rebate (\$/t)	Rebate (\$)	Tonnes of material	Rebate (\$/t)	Rebate (\$)	Tonnes of material	Rebate (\$/t)	Rebate (\$)	Tonnes of material	Rebate (\$)
Joondalup	Aluminium cans	35.55	\$5.42	\$192.55										35.55	\$192.55
	Steel cans	48.20	\$3.94	\$189.93										48.20	\$189.93
	Glass	348.45	\$3.57	\$1,244.46										348.45	\$1,244.46
	ONP	1,035.34	\$4.38	\$4,538.09										1,035.34	\$4,538.09
	OCC	78.60	\$4.79	\$376.42										78.60	\$376.42
	LPB														
	PET	52.81	\$4.68	\$247.06										52.81	\$247.06
	HDPE	48.20	\$4.68	\$225.50										48.20	\$225.50
	Batteries	20.58	\$3.65	\$75.02										20.58	\$75.02
	Ferrous metal														
	Solvents and paints														
	Hazardous														
	Inert														
	Non ferrous														
	Oil	16.10	\$3.31	\$53.34										16.10	\$53.34
	Textiles														
	Tyres														
	Wood/timber offcuts														
Food waste															
Mixed plastic															
Greenwaste															
Totals		1,683.83	\$4.21	\$7,142.37	1,616.26	\$3.49	\$5,640.65	616.14	\$3.47	\$2,137.05				2,232.40	\$7,777.70
					1,616.26	\$3.73	\$5,640.65	616.14	\$4.02	\$2,137.05				3,916.23	\$14,920.07

Local Government	Material	Kerbside			Vergeside			Dropoff			Resource Recovery			Totals	
		Tonnes of material	Rebate (\$/t)	Rebate (\$)	Tonnes of material	Rebate (\$/t)	Rebate (\$)	Tonnes of material	Rebate (\$/t)	Rebate (\$)	Tonnes of material	Rebate (\$/t)	Rebate (\$)	Tonnes of material	Rebate (\$)
Kalamunda	Aluminium cans	22.96	\$6.38	\$146.60									22.96	\$146.60	
	Steel cans	36.96	\$4.91	\$181.44									36.96	\$181.44	
	Glass	190.97	\$4.54	\$867.00									190.97	\$867.00	
	ONP	1,312.60	\$5.35	\$7,024.72									1,312.60	\$7,024.72	
	OCC	221.19	\$5.76	\$1,273.53									221.19	\$1,273.53	
	LPB	1.51	\$5.72	\$8.64									1.51	\$8.64	
	PET	26.93	\$5.65	\$152.07									26.93	\$152.07	
	HDPE	33.08	\$5.65	\$186.80									33.08	\$186.80	
	Batteries							6.80	\$4.28	\$29.11				6.80	\$29.11
	Ferrous metal	10.31	\$5.28	\$54.42				28.56	\$4.94	\$141.21				38.87	\$195.63
	Solvents and paints														
	Hazardous														
	Inert														
	Non ferrous														
	Oil							3.51	\$3.95	\$13.86				3.51	\$13.86
	Textiles														
	Tyres							1.98	\$4.28	\$8.45				1.98	\$8.45
	Wood/timber offcuts														
Food waste															
Mixed plastic	11.89	\$5.65	\$67.14										11.89	\$67.14	
Greenwaste				1,691.25	\$4.39	\$7,431.26	25.78	\$4.24	\$109.39				1,717.03	\$7,540.65	
Totals	1,868.40	\$5.17	\$9,962.36	1,691.25	\$4.52	\$7,431.26	66.63	\$4.80	\$302.02				3,626.28	\$17,695.64	

Local Government	Material	Kerbside			Vergeside			Dropoff			Resource Recovery			Totals	
		Tonnes of material	Rebate (\$/t)	Rebate (\$)	Tonnes of material	Rebate (\$/t)	Rebate (\$)	Tonnes of material	Rebate (\$/t)	Rebate (\$)	Tonnes of material	Rebate (\$/t)	Rebate (\$)	Tonnes of material	Rebate (\$)
Kojonup	Aluminium cans	0.15	\$11.08	\$1.64				0.48	\$17.14	\$8.23				0.63	\$9.86
	Steel cans														
	Glass	2.00	\$9.23	\$18.46				6.61	\$15.29	\$101.04				8.61	\$119.51
	ONP							1.79	\$16.10	\$28.86				1.79	\$28.86
	OCC							31.63	\$16.51	\$522.21				31.63	\$522.21
	LPB														
	PET														
	HDPE														
	Batteries														
	Ferrous metal							78.52	\$16.03	\$1,258.61				78.52	\$1,258.61
	Solvents and paints														
	Hazardous														
	Inert														
	Non ferrous														
	Oil														
	Textiles														
	Tyres														
	Wood/timber offcuts														
Food waste															
Mixed plastic															
Greenwaste															
Totals	2.15	\$9.52	\$20.10				119.03	\$15.33	\$1,918.94				121.18	\$1,939.04	

Local Government	Material	Kerbside			Vergeside			Dropoff			Resource Recovery			Totals	
		Tonnes of material	Rebate (\$/t)	Rebate (\$)	Tonnes of material	Rebate (\$/t)	Rebate (\$)	Tonnes of material	Rebate (\$/t)	Rebate (\$)	Tonnes of material	Rebate (\$/t)	Rebate (\$)	Tonnes of material	Rebate (\$)
Kwinana	Aluminium cans	7.99	\$6.11	\$48.78									7.99	\$48.78	
	Steel cans	20.37	\$4.63	\$94.30									20.37	\$94.30	
	Glass	99.96	\$4.26	\$425.85									99.96	\$425.85	
	ONP	625.52	\$5.07	\$3,172.60									625.52	\$3,172.60	
	OCC	58.23	\$5.48	\$318.97									58.23	\$318.97	
	LPB														
	PET	9.06	\$5.37	\$48.63									9.06	\$48.63	
	HDPE	9.62	\$5.37	\$51.63									9.62	\$51.63	
	Batteries	0.46	\$4.33	\$1.99									0.46	\$1.99	
	Ferrous metal														
	Solvents and paints														
	Hazardous														
	Inert														
	Non ferrous														
	Oil												0.04	\$0.16	
	Textiles														
	Tyres														
	Wood/timber offcuts														
Food waste															
Mixed plastic	12.86	\$5.37	\$69.02										12.86	\$69.02	
Greenwaste				378.55	\$4.03	\$1,524.81							378.55	\$1,524.81	
Totals	844.11	\$4.89	\$4,231.94	378.55	\$4.23	\$1,524.81							1,222.66	\$5,756.75	

Local Government	Material	Kerbside			Vergeside			Dropoff			Resource Recovery			Totals	
		Tonnes of material	Rebate (\$/t)	Rebate (\$)	Tonnes of material	Rebate (\$/t)	Rebate (\$)	Tonnes of material	Rebate (\$/t)	Rebate (\$)	Tonnes of material	Rebate (\$/t)	Rebate (\$)	Tonnes of material	Rebate (\$)
Mandurah	Aluminium cans	35.97	\$10.52	\$378.31										35.97	\$378.31
	Steel cans	33.91	\$9.04	\$306.60										33.91	\$306.60
	Glass	325.08	\$8.67	\$2,819.28				5.07	\$8.34	\$42.28				330.15	\$2,861.56
	ONP	1,734.74	\$9.48	\$16,452.87										1,734.74	\$16,452.87
	OCC	396.39	\$9.89	\$3,920.39				41.72	\$9.56	\$398.70				438.11	\$4,319.09
	LPB	3.44	\$9.85	\$33.90										3.44	\$33.90
	PET	35.05	\$9.78	\$342.77										35.05	\$342.77
	HDPE	45.48	\$9.78	\$444.77										45.48	\$444.77
	Batteries							5.87	\$8.41	\$49.38				5.87	\$49.38
	Ferrous metal	24.64	\$9.41	\$231.88	174.16	\$9.10	\$1,584.59	185.73	\$9.08	\$1,685.86				384.53	\$3,502.32
	Solvents and paints														
	Hazardous														
	Inert														
	Non ferrous														
	Oil							8.72	\$8.08	\$70.46				8.72	\$70.46
	Textiles														
	Tyres														
	Wood/timber offcuts														
	Food waste														
	Mixed plastic	15.34	\$9.78	\$150.02										15.34	\$150.02
Greenwaste				1,117.18	\$4.01	\$4,476.00	1,188.66	\$3.98	\$4,736.80				2,305.84	\$9,212.80	
Totals		2,650.04	\$8.99	\$25,080.79	1,291.34	\$8.24	\$6,060.59	1,435.77	\$8.71	\$6,983.48				5,377.15	\$38,124.86

Local Government	Material	Kerbside			Vergeside			Dropoff			Resource Recovery			Totals	
		Tonnes of material	Rebate (\$/t)	Rebate (\$)	Tonnes of material	Rebate (\$/t)	Rebate (\$)	Tonnes of material	Rebate (\$/t)	Rebate (\$)	Tonnes of material	Rebate (\$/t)	Rebate (\$)	Tonnes of material	Rebate (\$)
Manjimup	Aluminium cans							0.29	\$17.59	\$5.10				0.29	\$5.10
	Steel cans														
	Glass							39.52	\$15.74	\$622.17				39.52	\$622.17
	ONP														
	OCC							47.90	\$16.96	\$812.42				47.90	\$812.42
	LPB														
	PET														
	HDPE														
	Batteries							1.87	\$15.82	\$29.56				1.87	\$29.56
	Ferrous metal							295.29	\$16.48	\$4,866.67				295.29	\$4,866.67
	Solvents and paints														
	Hazardous														
	Inert														
	Non ferrous							0.62	\$16.48	\$10.25				0.62	\$10.25
	Oil							0.63	\$15.48	\$9.76				0.63	\$9.76
	Textiles														
	Tyres														
	Wood/timber offcuts														
	Food waste														
	Mixed plastic														
Greenwaste							141.00	\$4.29	\$604.37				141.00	\$604.37	
Totals							527.12	\$15.76	\$6,960.30				527.12	\$6,960.30	

Local Government	Material	Kerbside			Vergeside			Dropoff			Resource Recovery			Totals	
		Tonnes of material	Rebate (\$/t)	Rebate (\$)	Tonnes of material	Rebate (\$/t)	Rebate (\$)	Tonnes of material	Rebate (\$/t)	Rebate (\$)	Tonnes of material	Rebate (\$/t)	Rebate (\$)	Tonnes of material	Rebate (\$)
Melville	Aluminium cans	36.70	\$5.59	\$205.10										36.70	\$205.10
	Steel cans	93.60	\$4.11	\$384.94										93.60	\$384.94
	Glass	459.16	\$3.74	\$1,718.92										459.16	\$1,718.92
	ONP	2,872.95	\$4.56	\$13,087.36										2,872.95	\$13,087.36
	OCC	267.46	\$4.96	\$1,326.94										267.46	\$1,326.94
	LPB														
	PET	41.66	\$4.85	\$202.07										41.66	\$202.07
	HDPE	44.22	\$4.85	\$214.49										44.22	\$214.49
	Batteries	2.08	\$3.82	\$7.94										2.08	\$7.94
	Ferrous metal														
	Solvents and paints														
	Hazardous														
	Inert														
	Non ferrous														
	Oil	0.20	\$3.49	\$0.70										0.20	\$0.70
	Textiles														
	Tyres														
	Wood/timber offcuts														
	Food waste														
	Mixed plastic	59.06	\$4.85	\$286.47										59.06	\$286.47
Greenwaste				3,204.24	\$3.64	\$11,665.39							3,204.24	\$11,665.39	
Totals		3,877.09	\$4.37	\$17,434.94	3,204.24	\$3.77	\$11,665.39						7,081.33	\$29,100.33	

Local Government	Material	Kerbside			Vergeside			Dropoff			Resource Recovery			Totals	
		Tonnes of material	Rebate (\$/t)	Rebate (\$)	Tonnes of material	Rebate (\$/t)	Rebate (\$)	Tonnes of material	Rebate (\$/t)	Rebate (\$)	Tonnes of material	Rebate (\$/t)	Rebate (\$)	Tonnes of material	Rebate (\$)
Merredin	Aluminium cans	0.00	\$11.03	\$0.00				1.73	\$16.81	\$29.07				1.73	\$29.07
	Steel cans														
	Glass														
	ONP							5.43	\$15.78	\$85.75				5.43	\$85.75
	OCC														
	LPB														
	PET							0.19	\$16.08	\$3.05				0.19	\$3.05
	HDPE							0.18	\$16.08	\$2.89				0.18	\$2.89
	Batteries														
	Ferrous metal							116.13	\$15.71	\$1,823.94				116.13	\$1,823.94
	Solvents and paints														
	Hazardous														
	Inert														
	Non ferrous														
	Oil														
	Textiles														
	Tyres														
Wood/timber offcuts															
Food waste															
Mixed plastic							0.04	\$16.08	\$0.61				0.04	\$0.61	
Greenwaste															
Totals							123.70	\$15.02	\$1,945.32				123.70	\$1,945.32	

Local Government	Material	Kerbside			Vergeside			Dropoff			Resource Recovery			Totals	
		Tonnes of material	Rebate (\$/t)	Rebate (\$)	Tonnes of material	Rebate (\$/t)	Rebate (\$)	Tonnes of material	Rebate (\$/t)	Rebate (\$)	Tonnes of material	Rebate (\$/t)	Rebate (\$)	Tonnes of material	Rebate (\$)
Mindarie Regional Council	Aluminium cans							0.38	\$5.71	\$2.17				0.38	\$2.17
	Steel cans														
	Glass							35.50	\$3.86	\$137.10				35.50	\$137.10
	ONP							124.80	\$4.67	\$583.28				124.80	\$583.28
	OCC														
	LPB														
	PET														
	HDPE														
	Batteries							18.79	\$3.94	\$73.95				18.79	\$73.95
	Ferrous metal							496.40	\$4.60	\$2,283.42				496.40	\$2,283.42
	Solvents and paints														
	Hazardous														
	Inert							125.83	\$3.86	\$485.96				125.83	\$485.96
	Non ferrous							0.65	\$4.60	\$2.99				0.65	\$2.99
	Oil														
	Textiles							1.90	\$3.49	\$6.64				1.90	\$6.64
	Tyres														
Wood/timber offcuts															
Food waste															
Mixed plastic							0.17	\$4.97	\$0.86				0.17	\$0.86	
Greenwaste							75.62	\$3.90	\$294.83				75.62	\$294.83	
Totals							880.04	\$4.45	\$3,871.20				880.04	\$3,871.20	

Local Government	Material	Kerbside			Vergeside			Dropoff			Resource Recovery			Totals	
		Tonnes of material	Rebate (\$/t)	Rebate (\$)	Tonnes of material	Rebate (\$/t)	Rebate (\$)	Tonnes of material	Rebate (\$/t)	Rebate (\$)	Tonnes of material	Rebate (\$/t)	Rebate (\$)	Tonnes of material	Rebate (\$)
Mingenew	Aluminium cans														
	Steel cans														
	Glass														
	ONP														
	OCC														
	LPB														
	PET														
	HDPE														
	Batteries														
	Ferrous metal							110.13	\$16.61	\$1,829.29				110.13	\$1,829.29
	Solvents and paints														
	Hazardous														
	Inert														
	Non ferrous														
	Oil														
	Textiles														
	Tyres														
Wood/timber offcuts															
Food waste															
Mixed plastic															
Greenwaste															
Totals							110.13	\$15.88	\$1,829.29				110.13	\$1,829.29	

Local Government	Material	Kerbside			Vergeside			Dropoff			Resource Recovery			Totals	
		Tonnes of material	Rebate (\$/t)	Rebate (\$)	Tonnes of material	Rebate (\$/t)	Rebate (\$)	Tonnes of material	Rebate (\$/t)	Rebate (\$)	Tonnes of material	Rebate (\$/t)	Rebate (\$)	Tonnes of material	Rebate (\$)
Moora	Aluminium cans							1.93	\$16.68	\$32.23				1.93	\$32.23
	Steel cans														
	Glass							9.56	\$14.84	\$141.86				9.56	\$141.86
	ONP							5.12	\$15.65	\$80.13				5.12	\$80.13
	OCC														
	LPB														
	PET														
	HDPE														
	Batteries														
	Ferrous metal														
	Solvents and paints														
	Hazardous														
	Inert														
	Non ferrous														
	Oil														
	Textiles														
	Tyres														
	Wood/timber offcuts														
Food waste															
Mixed plastic															
Greenwaste															
Totals								16.61	\$14.90	\$254.23				16.61	\$254.23

Local Government	Material	Kerbside			Vergeside			Dropoff			Resource Recovery			Totals	
		Tonnes of material	Rebate (\$/t)	Rebate (\$)	Tonnes of material	Rebate (\$/t)	Rebate (\$)	Tonnes of material	Rebate (\$/t)	Rebate (\$)	Tonnes of material	Rebate (\$/t)	Rebate (\$)	Tonnes of material	Rebate (\$)
Mosman Park	Aluminium cans	7.36	\$5.46	\$40.18										7.36	\$40.18
	Steel cans	2.96	\$3.98	\$11.79										2.96	\$11.79
	Glass	66.40	\$3.61	\$240.00										66.40	\$240.00
	ONP	281.88	\$4.43	\$1,247.67										281.88	\$1,247.67
	OCC	38.59	\$4.83	\$186.47										38.59	\$186.47
	LPB	3.46	\$4.80	\$16.59										3.46	\$16.59
	PET	11.12	\$4.72	\$52.50										11.12	\$52.50
	HDPE	9.47	\$4.72	\$44.71										9.47	\$44.71
	Batteries														
	Ferrous metal				21.00	\$3.95	\$83.04							21.00	\$83.04
	Solvents and paints														
	Hazardous														
	Inert														
	Non ferrous														
	Oil														
	Textiles														
	Tyres														
	Wood/timber offcuts														
Food waste															
Mixed plastic															
Greenwaste				242.76	\$3.38	\$821.09							242.76	\$821.09	
Totals		421.24	\$4.24	\$1,839.92	263.76	\$3.51	\$904.13						685.00	\$2,744.05	

Local Government	Material	Kerbside			Vergeside			Dropoff			Resource Recovery			Totals	
		Tonnes of material	Rebate (\$/t)	Rebate (\$)	Tonnes of material	Rebate (\$/t)	Rebate (\$)	Tonnes of material	Rebate (\$/t)	Rebate (\$)	Tonnes of material	Rebate (\$/t)	Rebate (\$)	Tonnes of material	Rebate (\$)
Mt Marshall	Aluminium cans							0.16	\$16.68	\$2.67				0.16	\$2.67
	Steel cans							0.14	\$15.21	\$2.13				0.14	\$2.13
	Glass							0.77	\$14.84	\$11.43				0.77	\$11.43
	ONP							2.13	\$15.65	\$33.34				2.13	\$33.34
	OCC							0.55	\$16.06	\$8.83				0.55	\$8.83
	LPB							0.11	\$16.02	\$1.76				0.11	\$1.76
	PET							0.16	\$15.95	\$2.55				0.16	\$2.55
	HDPE							0.18	\$15.95	\$2.87				0.18	\$2.87
	Batteries														
	Ferrous metal														
	Solvents and paints														
	Hazardous														
	Inert														
	Non ferrous														
	Oil														
	Textiles														
	Tyres														
	Wood/timber offcuts														
Food waste															
Mixed plastic															
Greenwaste															
Totals								4.20	\$14.90	\$65.58				4.20	\$65.58

Local Government	Material	Kerbside			Vergeside			Dropoff			Resource Recovery			Totals	
		Tonnes of material	Rebate (\$/t)	Rebate (\$)	Tonnes of material	Rebate (\$/t)	Rebate (\$)	Tonnes of material	Rebate (\$/t)	Rebate (\$)	Tonnes of material	Rebate (\$/t)	Rebate (\$)	Tonnes of material	Rebate (\$)
Mundaring	Aluminium cans	15.46	\$6.36	\$98.38									15.46	\$98.38	
	Steel cans	24.89	\$4.89	\$121.65									24.89	\$121.65	
	Glass	128.60	\$4.52	\$581.08				29.96	\$4.18	\$125.38				158.56	\$706.45
	ONP	883.32	\$5.33	\$4,708.30				17.62	\$5.00	\$88.04				900.94	\$4,796.34
	OCC	148.94	\$5.74	\$854.34										148.94	\$854.34
	LPB	1.01	\$5.70	\$5.76										1.01	\$5.76
	PET	18.13	\$5.63	\$101.99										18.13	\$101.99
	HDPE	22.27	\$5.63	\$125.28				10.80	\$5.29	\$57.15				33.07	\$182.43
	Batteries							24.50	\$4.26	\$104.34				24.50	\$104.34
	Ferrous metal	6.94	\$5.26	\$36.48				433.12	\$4.92	\$2,132.17				440.06	\$2,168.65
	Solvents and paints														
	Hazardous														
	Inert														
	Non ferrous							5.98	\$4.92	\$29.44				5.98	\$29.44
	Oil							11.92	\$3.93	\$46.80				11.92	\$46.80
	Textiles	7.99	\$4.15	\$33.15										7.99	\$33.15
	Tyres														
	Wood/timber offcuts														
	Food waste														
	Mixed plastic														
Greenwaste							3,477.73	\$4.74	\$16,478.63				3,477.73	\$16,478.63	
Totals		1,257.55	\$5.15	\$6,666.40			4,011.63	\$4.80	\$19,061.95				5,269.18	\$25,728.35	

Local Government	Material	Kerbside			Vergeside			Dropoff			Resource Recovery			Totals	
		Tonnes of material	Rebate (\$/t)	Rebate (\$)	Tonnes of material	Rebate (\$/t)	Rebate (\$)	Tonnes of material	Rebate (\$/t)	Rebate (\$)	Tonnes of material	Rebate (\$/t)	Rebate (\$)	Tonnes of material	Rebate (\$)
Murray	Aluminium cans	5.46	\$10.75	\$58.72			0.65	\$16.23	\$10.50				6.11	\$69.22	
	Steel cans	5.46	\$9.28	\$50.66			0.65	\$14.76	\$9.55				6.11	\$60.21	
	Glass	46.13	\$8.91	\$410.99			5.47	\$14.39	\$78.71				51.60	\$489.70	
	ONP	270.02	\$9.72	\$2,624.89			32.04	\$15.20	\$487.03				302.06	\$3,111.93	
	OCC	59.72	\$10.13	\$604.78			7.09	\$15.60	\$110.61				66.81	\$715.39	
	LPB	0.58	\$10.09	\$5.85			0.07	\$15.57	\$1.03				0.65	\$6.88	
	PET	5.52	\$10.02	\$55.29			0.66	\$15.49	\$10.20				6.18	\$65.49	
	HDPE	7.12	\$10.02	\$71.32			0.86	\$15.49	\$13.32				7.98	\$84.64	
	Batteries														
	Ferrous metal	4.32	\$9.65	\$41.68			178.73	\$15.13	\$2,703.32				183.05	\$2,744.99	
	Solvents and paints														
	Hazardous														
	Inert														
	Non ferrous														
	Oil														
	Textiles														
	Tyres														
	Wood/timber offcuts														
	Food waste														
	Mixed plastic	2.44	\$10.02	\$24.44				0.29	\$15.49	\$4.49				2.73	\$28.93
Greenwaste															
Totals		406.77	\$9.23	\$3,948.62			226.50	\$14.47	\$3,428.76				633.27	\$7,377.38	

Local Government	Material	Kerbside			Vergeside			Dropoff			Resource Recovery			Totals	
		Tonnes of material	Rebate (\$/t)	Rebate (\$)	Tonnes of material	Rebate (\$/t)	Rebate (\$)	Tonnes of material	Rebate (\$/t)	Rebate (\$)	Tonnes of material	Rebate (\$/t)	Rebate (\$)	Tonnes of material	Rebate (\$)
Nannup	Aluminium cans						0.14	\$17.20	\$2.41				0.14	\$2.41	
	Steel cans						0.85	\$15.72	\$13.35				0.85	\$13.35	
	Glass						14.66	\$15.36	\$225.12				14.66	\$225.12	
	ONP														
	OCC														
	LPB														
	PET														
	HDPE														
	Batteries							3.65	\$15.43	\$56.32				3.65	\$56.32
	Ferrous metal							148.36	\$16.09	\$2,387.66				148.36	\$2,387.66
	Solvents and paints														
	Hazardous														
	Inert														
	Non ferrous							0.23	\$16.09	\$3.62				0.23	\$3.62
	Oil														
	Textiles														
	Tyres														
	Wood/timber offcuts														
	Food waste														
	Mixed plastic														
Greenwaste															
Totals							167.88	\$15.39	\$2,688.48				167.88	\$2,688.48	

Local Government	Material	Kerbside			Vergeside			Dropoff			Resource Recovery			Totals	
		Tonnes of material	Rebate (\$/t)	Rebate (\$)	Tonnes of material	Rebate (\$/t)	Rebate (\$)	Tonnes of material	Rebate (\$/t)	Rebate (\$)	Tonnes of material	Rebate (\$/t)	Rebate (\$)	Tonnes of material	Rebate (\$)
Nedlands	Aluminium cans	23.40	\$5.98	\$139.84									23.40	\$139.84	
	Steel cans	8.52	\$4.50	\$38.34									8.52	\$38.34	
	Glass	186.34	\$4.13	\$769.78									186.34	\$769.78	
	ONP	816.29	\$4.94	\$4,034.76									816.29	\$4,034.76	
	OCC	125.67	\$5.35	\$672.17									125.67	\$672.17	
	LPB	9.96	\$5.31	\$52.91									9.96	\$52.91	
	PET	22.36	\$5.24	\$117.12									22.36	\$117.12	
	HDPE	15.89	\$5.24	\$83.23									15.89	\$83.23	
	Batteries														
	Ferrous metal														
	Solvents and paints														
	Hazardous														
	Inert														
	Non ferrous				6.56	\$4.43	\$29.05							6.56	\$29.05
	Oil														
	Textiles														
	Tyres														
	Wood/timber offcuts														
	Food waste														
	Mixed plastic	5.06	\$5.24	\$26.50										5.06	\$26.50
Greenwaste				687.95	\$3.86	\$2,652.63							687.95	\$2,652.63	
Totals		1,213.49	\$4.75	\$5,934.65	694.51	\$3.98	\$2,681.68						1,908.00	\$8,616.33	

Local Government	Material	Kerbside			Vergeside			Dropoff			Resource Recovery			Totals	
		Tonnes of material	Rebate (\$/t)	Rebate (\$)	Tonnes of material	Rebate (\$/t)	Rebate (\$)	Tonnes of material	Rebate (\$/t)	Rebate (\$)	Tonnes of material	Rebate (\$/t)	Rebate (\$)	Tonnes of material	Rebate (\$)
Northam (shire)	Aluminium cans							0.34	\$16.43	\$5.58				0.34	\$5.58
	Steel cans							0.31	\$14.95	\$4.63				0.31	\$4.63
	Glass							1.60	\$14.58	\$23.33				1.60	\$23.33
	ONP							4.60	\$15.39	\$70.81				4.60	\$70.81
	OCC							1.15	\$15.80	\$18.17				1.15	\$18.17
	LPB							0.23	\$15.76	\$3.63				0.23	\$3.63
	PET							0.34	\$15.69	\$5.33				0.34	\$5.33
	HDPE							0.37	\$15.69	\$5.80				0.37	\$5.80
	Batteries														
	Ferrous metal							138.17	\$15.32	\$2,116.58				138.17	\$2,116.58
	Solvents and paints														
	Hazardous														
	Inert														
	Non ferrous														
	Oil							4.50	\$14.32	\$64.45				4.50	\$64.45
	Textiles														
	Tyres														
	Wood/timber offcuts														
	Food waste														
	Mixed plastic														
Greenwaste															
Totals							151.61	\$14.36	\$2,318.31				151.61	\$2,318.31	

Local Government	Material	Kerbside			Vergeside			Dropoff			Resource Recovery			Totals	
		Tonnes of material	Rebate (\$/t)	Rebate (\$)	Tonnes of material	Rebate (\$/t)	Rebate (\$)	Tonnes of material	Rebate (\$/t)	Rebate (\$)	Tonnes of material	Rebate (\$/t)	Rebate (\$)	Tonnes of material	Rebate (\$)
Northam (town)	Aluminium cans							1.65	\$16.04	\$26.46				1.65	\$26.46
	Steel cans							1.45	\$14.56	\$21.12				1.45	\$21.12
	Glass							7.70	\$14.19	\$109.29				7.70	\$109.29
	ONP							21.37	\$15.01	\$320.66				21.37	\$320.66
	OCC							5.53	\$15.41	\$85.22				5.53	\$85.22
	LPB							1.10	\$15.37	\$16.91				1.10	\$16.91
	PET							1.65	\$15.30	\$25.25				1.65	\$25.25
	HDPE							1.77	\$15.30	\$27.08				1.77	\$27.08
	Batteries														
	Ferrous metal							155.82	\$14.93	\$2,326.61				155.82	\$2,326.61
	Solvents and paints														
	Hazardous														
	Inert														
	Non ferrous														
	Oil							2.16	\$13.94	\$30.10				2.16	\$30.10
	Textiles														
	Tyres														
	Wood/timber offcuts														
	Food waste														
	Mixed plastic														
Greenwaste															
Totals							200.20	\$14.27	\$2,988.71				200.20	\$2,988.71	

Local Government	Material	Kerbside			Vergeside			Dropoff			Resource Recovery			Totals	
		Tonnes of material	Rebate (\$/t)	Rebate (\$)	Tonnes of material	Rebate (\$/t)	Rebate (\$)	Tonnes of material	Rebate (\$/t)	Rebate (\$)	Tonnes of material	Rebate (\$/t)	Rebate (\$)	Tonnes of material	Rebate (\$)
Peppermint Grove	Aluminium cans	1.63	\$5.95	\$9.71										1.63	\$9.71
	Steel cans	0.66	\$4.48	\$2.96										0.66	\$2.96
	Glass	14.49	\$4.11	\$59.55										14.49	\$59.55
	ONP	62.54	\$4.92	\$307.78										62.54	\$307.78
	OCC	8.55	\$5.33	\$45.55										8.55	\$45.55
	LPB	0.77	\$5.29	\$4.07										0.77	\$4.07
	PET	2.47	\$5.22	\$12.88										2.47	\$12.88
	HDPE	2.24	\$5.22	\$11.68										2.24	\$11.68
	Batteries														
	Ferrous metal														
	Solvents and paints														
	Hazardous														
	Inert														
	Non ferrous														
	Oil														
	Textiles														
	Tyres														
	Wood/timber offcuts														
Food waste															
Mixed plastic															
Greenwaste															
Totals		93.35	\$4.73	\$454.18										93.35	\$454.18

Local Government	Material	Kerbside			Vergeside			Dropoff			Resource Recovery			Totals	
		Tonnes of material	Rebate (\$/t)	Rebate (\$)	Tonnes of material	Rebate (\$/t)	Rebate (\$)	Tonnes of material	Rebate (\$/t)	Rebate (\$)	Tonnes of material	Rebate (\$/t)	Rebate (\$)	Tonnes of material	Rebate (\$)
Perth	Aluminium cans														
	Steel cans														
	Glass	43.00	\$3.99	\$171.62										43.00	\$171.62
	ONP	260.00	\$4.80	\$1,248.75										260.00	\$1,248.75
	OCC														
	LPB														
	PET														
	HDPE														
	Batteries														
	Ferrous metal														
	Solvents and paints														
	Hazardous														
	Inert														
	Non ferrous														
	Oil														
	Textiles														
	Tyres														
	Wood/timber offcuts														
Food waste															
Mixed plastic															
Greenwaste															
Totals		303.00	\$4.62	\$1,420.37										303.00	\$1,420.37

Local Government	Material	Kerbside			Vergeside			Dropoff			Resource Recovery			Totals	
		Tonnes of material	Rebate (\$/t)	Rebate (\$)	Tonnes of material	Rebate (\$/t)	Rebate (\$)	Tonnes of material	Rebate (\$/t)	Rebate (\$)	Tonnes of material	Rebate (\$/t)	Rebate (\$)	Tonnes of material	Rebate (\$)
Pingelly	Aluminium cans	0.17	\$11.01	\$1.87										0.17	\$1.87
	Steel cans														
	Glass	2.94	\$9.17	\$26.95										2.94	\$26.95
	ONP														
	OCC														
	LPB														
	PET														
	HDPE														
	Batteries														
	Ferrous metal														
	Solvents and paints														
	Hazardous														
	Inert														
	Non ferrous														
	Oil														
	Textiles														
	Tyres														
	Wood/timber offcuts														
Food waste															
Mixed plastic	0.52	\$10.27	\$5.34										0.52	\$5.34	
Greenwaste															
Totals		3.63	\$9.47	\$34.17										3.63	\$34.17

Local Government	Material	Kerbside			Vergeside			Dropoff			Resource Recovery			Totals	
		Tonnes of material	Rebate (\$/t)	Rebate (\$)	Tonnes of material	Rebate (\$/t)	Rebate (\$)	Tonnes of material	Rebate (\$/t)	Rebate (\$)	Tonnes of material	Rebate (\$/t)	Rebate (\$)	Tonnes of material	Rebate (\$)
Rockingham	Aluminium cans	30.69	\$6.13	\$188.03									30.69	\$188.03	
	Steel cans														
	Glass	384.11	\$4.28	\$1,644.65				1.49	\$3.95	\$5.90				385.60	\$1,650.55
	ONP	2,403.29	\$5.09	\$12,241.09										2,403.29	\$12,241.09
	OCC	223.74	\$5.50	\$1,230.42				69.24	\$5.17	\$357.66				292.98	\$1,588.08
	LPB														
	PET	34.85	\$5.39	\$187.79										34.85	\$187.79
	HDPE	36.99	\$5.39	\$199.33										36.99	\$199.33
	Batteries	1.75	\$4.36	\$7.62				11.79	\$4.02	\$47.42				13.54	\$55.04
	Ferrous metal	78.31	\$5.02	\$393.09	158.04	\$4.71	\$743.99	431.97	\$4.69	\$2,024.25				668.32	\$3,161.33
	Solvents and paints														
	Hazardous														
	Inert														
	Non ferrous							6.03	\$4.69	\$28.26				6.03	\$28.26
	Oil	0.17	\$4.02	\$0.68				9.96	\$3.69	\$36.76				10.13	\$37.44
	Textiles														
	Tyres														
	Wood/timber offcuts														
	Food waste														
Mixed plastic	49.41	\$5.39	\$266.25										49.41	\$266.25	
Greenwaste				565.39	\$4.01	\$2,265.24	2,101.29	\$4.11	\$8,644.99				2,666.68	\$10,910.24	
Totals	3,243.31	\$4.91	\$16,358.96	723.43	\$4.25	\$3,009.23	2,631.78	\$4.55	\$11,145.24				6,598.52	\$30,513.42	

Local Government	Material	Kerbside			Vergeside			Dropoff			Resource Recovery			Totals	
		Tonnes of material	Rebate (\$/t)	Rebate (\$)	Tonnes of material	Rebate (\$/t)	Rebate (\$)	Tonnes of material	Rebate (\$/t)	Rebate (\$)	Tonnes of material	Rebate (\$/t)	Rebate (\$)	Tonnes of material	Rebate (\$)
Serpentine-Jarrahdale	Aluminium cans	6.27	\$6.49	\$40.71									6.27	\$40.71	
	Steel cans	5.85	\$5.02	\$29.35									5.85	\$29.35	
	Glass	54.47	\$4.65	\$253.16									54.47	\$253.16	
	ONP	331.17	\$5.46	\$1,807.98									331.17	\$1,807.98	
	OCC	67.95	\$5.87	\$398.54									67.95	\$398.54	
	LPB	0.60	\$5.83	\$3.50									0.60	\$3.50	
	PET	6.19	\$5.75	\$35.62									6.19	\$35.62	
	HDPE	8.38	\$5.75	\$48.22									8.38	\$48.22	
	Batteries														
	Ferrous metal	5.42	\$5.39	\$29.19										5.42	\$29.19
	Solvents and paints														
	Hazardous														
	Inert														
	Non ferrous														
	Oil														
	Textiles														
	Tyres														
	Wood/timber offcuts														
	Food waste														
Mixed plastic	2.83	\$5.75	\$16.29										2.83	\$16.29	
Greenwaste															
Totals	489.13	\$5.27	\$2,662.55										489.13	\$2,662.55	

Local Government	Material	Kerbside			Vergeside			Dropoff			Resource Recovery			Totals	
		Tonnes of material	Rebate (\$/t)	Rebate (\$)	Tonnes of material	Rebate (\$/t)	Rebate (\$)	Tonnes of material	Rebate (\$/t)	Rebate (\$)	Tonnes of material	Rebate (\$/t)	Rebate (\$)	Tonnes of material	Rebate (\$)
South Perth	Aluminium cans	17.40	\$5.35	\$93.12									17.40	\$93.12	
	Steel cans	28.03	\$3.88	\$108.64									28.03	\$108.64	
	Glass	144.76	\$3.51	\$507.65									144.76	\$507.65	
	ONP	995.73	\$4.32	\$4,300.17							233.38	\$5.37	\$1,254.01	1,229.11	\$5,554.18
	OCC	167.55	\$4.72	\$791.59							101.47	\$5.78	\$586.41	269.02	\$1,377.99
	LPB	1.13	\$4.69	\$5.30							20.29	\$5.74	\$116.53	21.42	\$121.83
	PET	20.43	\$4.61	\$94.26										20.43	\$94.26
	HDPE	25.09	\$4.61	\$115.76										25.09	\$115.76
	Batteries										1.52	\$4.64	\$7.03	1.52	\$7.03
	Ferrous metal	7.82	\$4.24	\$33.19	106.12	\$3.93	\$417.34	110.85	\$3.91	\$433.56	38.92	\$5.30	\$206.24	263.71	\$1,090.33
	Solvents and paints														
	Hazardous														
	Inert														
	Non ferrous														
	Oil							0.71	\$2.91	\$2.07	0.21	\$4.30	\$0.88	0.92	\$2.95
	Textiles														
	Tyres														
	Wood/timber offcuts														
	Food waste										1,646.34	\$3.90	\$6,416.36	1,646.34	\$6,416.36
Mixed plastic	9.03	\$4.61	\$41.66										9.03	\$41.66	
Greenwaste				403.10	\$3.23	\$1,302.68	379.58	\$3.21	\$1,218.50	1,423.10	\$4.58	\$6,513.40	2,205.78	\$9,034.59	
Totals	1,416.97	\$4.14	\$6,091.35	509.22	\$3.48	\$1,720.02	491.14	\$3.77	\$1,654.13	3,465.22	\$5.09	\$15,100.87	5,882.55	\$24,566.36	

Local Government	Material	Kerbside			Vergeside			Dropoff			Resource Recovery			Totals			
		Tonnes of material	Rebate (\$/t)	Rebate (\$)	Tonnes of material	Rebate (\$/t)	Rebate (\$)	Tonnes of material	Rebate (\$/t)	Rebate (\$)	Tonnes of material	Rebate (\$/t)	Rebate (\$)	Tonnes of material	Rebate (\$)		
Southern Metropolitan Regional Council	Aluminium cans	0.00	\$5.87	\$0.00													
	Steel cans																
	Glass																
	ONP										1,269.26	\$6.02	\$7,639.67	1,269.26	\$7,639.67		
	OCC										602.92	\$6.42	\$3,873.69	602.92	\$3,873.69		
	LPB										45.54	\$6.39	\$290.91	45.54	\$290.91		
	PET																
	HDPE																
	Batteries										7.34	\$5.28	\$38.78	7.34	\$38.78		
	Ferrous metal										188.40	\$5.95	\$1,120.08	188.40	\$1,120.08		
	Solvents and paints																
	Hazardous																
	Inert																
	Non ferrous																
	Oil										1.00	\$4.95	\$4.92	1.00	\$4.92		
	Textiles										548.58	\$4.84	\$2,654.17	548.58	\$2,654.17		
	Tyres																
	Wood/timber offcuts																
Food waste										5,709.43	\$4.54	\$25,938.37	5,709.43	\$25,938.37			
Mixed plastic																	
Greenwaste										3,793.80	\$3.90	\$14,791.63	3,793.80	\$14,791.63			
Totals										3,793.80	\$4.45	\$14,791.63	16,767.30	\$5.74	\$85,584.26	20,561.10	\$100,375.89

Local Government	Material	Kerbside			Vergeside			Dropoff			Resource Recovery			Totals			
		Tonnes of material	Rebate (\$/t)	Rebate (\$)	Tonnes of material	Rebate (\$/t)	Rebate (\$)	Tonnes of material	Rebate (\$/t)	Rebate (\$)	Tonnes of material	Rebate (\$/t)	Rebate (\$)	Tonnes of material	Rebate (\$)		
Stirling	Aluminium cans										73.93	\$7.44	\$550.01	73.93	\$550.01		
	Steel cans										210.21	\$5.96	\$1,253.62	210.21	\$1,253.62		
	Glass							23.80	\$3.91	\$92.94	350.31	\$5.59	\$1,959.87	374.11	\$2,052.81		
	ONP										3,214.31	\$6.41	\$20,592.24	3,214.31	\$20,592.24		
	OCC							155.60	\$5.12	\$797.09	428.57	\$6.81	\$2,919.55	584.17	\$3,716.64		
	LPB										71.42	\$6.78	\$483.90	71.42	\$483.90		
	PET										37.51	\$6.70	\$251.38	37.51	\$251.38		
	HDPE										37.51	\$6.70	\$251.38	37.51	\$251.38		
	Batteries							46.20	\$3.98	\$183.82	9.51	\$5.67	\$53.91	55.71	\$237.73		
	Ferrous metal							203.64	\$4.64	\$945.50				203.64	\$945.50		
	Solvents and paints																
	Hazardous																
	Inert																
	Non ferrous							13.86	\$4.64	\$64.36				13.86	\$64.36		
	Oil							30.74	\$3.65	\$112.10				30.74	\$112.10		
	Textiles																
	Tyres																
	Wood/timber offcuts																
Food waste										2,500.00	\$4.93	\$12,326.26	2,500.00	\$12,326.26			
Mixed plastic																	
Greenwaste							6,291.99	\$4.48	\$28,188.38	4,172.45	\$4.33	\$18,064.10	928.58	\$5.11	\$4,749.68	11,393.02	\$51,002.15
Totals							6,291.99	\$4.26	\$28,188.38	4,646.29	\$4.52	\$20,259.91	7,861.86	\$6.10	\$45,391.79	18,800.14	\$93,840.08

Local Government	Material	Kerbside			Vergeside			Dropoff			Resource Recovery			Totals	
		Tonnes of material	Rebate (\$/t)	Rebate (\$)	Tonnes of material	Rebate (\$/t)	Rebate (\$)	Tonnes of material	Rebate (\$/t)	Rebate (\$)	Tonnes of material	Rebate (\$/t)	Rebate (\$)	Tonnes of material	Rebate (\$)
Subiaco	Aluminium cans	9.43	\$5.31	\$50.06										9.43	\$50.06
	Steel cans	3.14	\$3.83	\$12.03										3.14	\$12.03
	Glass	245.28	\$3.46	\$849.60										245.28	\$849.60
	ONP	305.21	\$4.28	\$1,304.95										305.21	\$1,304.95
	OCC														
	LPB														
	PET	15.73	\$4.57	\$71.90										15.73	\$71.90
	HDPE	15.73	\$4.57	\$71.90										15.73	\$71.90
	Batteries														
	Ferrous metal				9.46	\$3.95	\$37.41							9.46	\$37.41
	Solvents and paints														
	Hazardous														
	Inert														
	Non ferrous														
	Oil														
	Textiles														
	Tyres														
	Wood/timber offcuts														
Food waste															
Mixed plastic															
Greenwaste				296.15	\$3.25	\$963.43							296.15	\$963.43	
Totals		594.52	\$4.10	\$2,360.44	305.61	\$3.50	\$1,000.84						900.13	\$3,361.28	

Local Government	Material	Kerbside			Vergeside			Dropoff			Resource Recovery			Totals	
		Tonnes of material	Rebate (\$/t)	Rebate (\$)	Tonnes of material	Rebate (\$/t)	Rebate (\$)	Tonnes of material	Rebate (\$/t)	Rebate (\$)	Tonnes of material	Rebate (\$/t)	Rebate (\$)	Tonnes of material	Rebate (\$)
Swan	Aluminium cans	22.47	\$6.23	\$140.08										22.47	\$140.08
	Steel cans	31.33	\$4.76	\$149.08										31.33	\$149.08
	Glass	221.50	\$4.39	\$972.24										221.50	\$972.24
	ONP	866.90	\$5.20	\$4,508.83										866.90	\$4,508.83
	OCC	193.28	\$5.61	\$1,083.72										193.28	\$1,083.72
	LPB														
	PET	32.48	\$5.50	\$178.52										32.48	\$178.52
	HDPE	28.77	\$5.50	\$158.13										28.77	\$158.13
	Batteries														
	Ferrous metal														
	Solvents and paints														
	Hazardous														
	Inert														
	Non ferrous														
	Oil														
	Textiles														
	Tyres														
	Wood/timber offcuts														
	Food waste														
	Mixed plastic														
Greenwaste				738.96	\$4.24	\$3,135.61								738.96	\$3,135.61
Totals		1,396.73	\$5.03	\$7,190.59	738.96	\$4.49	\$3,135.61							2,135.69	\$10,326.20

Local Government	Material	Kerbside			Vergeside			Dropoff			Resource Recovery			Totals		
		Tonnes of material	Rebate (\$/t)	Rebate (\$)	Tonnes of material	Rebate (\$/t)	Rebate (\$)	Tonnes of material	Rebate (\$/t)	Rebate (\$)	Tonnes of material	Rebate (\$/t)	Rebate (\$)	Tonnes of material	Rebate (\$)	
Victoria Park	Aluminium cans	11.33	\$5.60	\$63.44										11.33	\$63.44	
	Steel cans	10.74	\$4.12	\$44.28										10.74	\$44.28	
	Glass	196.32	\$3.75	\$737.06										196.32	\$737.06	
	ONP	539.63	\$4.57	\$2,464.02										539.63	\$2,464.02	
	OCC	75.89	\$4.97	\$377.33										75.89	\$377.33	
	LPB	12.21	\$4.94	\$60.26										12.21	\$60.26	
	PET	25.98	\$4.86	\$126.30										25.98	\$126.30	
	HDPE	21.68	\$4.86	\$105.39										21.68	\$105.39	
	Batteries															
	Ferrous metal				14.10	\$4.17	\$58.79								14.10	\$58.79
	Solvents and paints															
	Hazardous															
	Inert															
	Non ferrous															
	Oil															
	Textiles															
	Tyres															
	Wood/timber offcuts															
	Food waste															
	Mixed plastic															
Greenwaste				485.63	\$3.51	\$1,705.27								485.63	\$1,705.27	
Totals		893.78	\$4.39	\$3,978.08	499.73	\$3.72	\$1,764.06							1,393.51	\$5,742.15	

Local Government	Material	Kerbside			Vergeside			Dropoff			Resource Recovery			Totals		
		Tonnes of material	Rebate (\$/t)	Rebate (\$)	Tonnes of material	Rebate (\$/t)	Rebate (\$)	Tonnes of material	Rebate (\$/t)	Rebate (\$)	Tonnes of material	Rebate (\$/t)	Rebate (\$)	Tonnes of material	Rebate (\$)	
Vincent	Aluminium cans	12.16	\$5.30	\$64.40										12.16	\$64.40	
	Steel cans	5.61	\$3.82	\$21.44										5.61	\$21.44	
	Glass	285.18	\$3.45	\$984.72										285.18	\$984.72	
	ONP	336.60	\$4.26	\$1,435.53										336.60	\$1,435.53	
	OCC	187.00	\$4.67	\$873.42										187.00	\$873.42	
	LPB	17.77	\$4.63	\$82.32										17.77	\$82.32	
	PET	74.80	\$4.56	\$341.09										74.80	\$341.09	
	HDPE	74.80	\$4.56	\$341.09										74.80	\$341.09	
	Batteries															
	Ferrous metal				24.04	\$3.91	\$94.03								24.04	\$94.03
	Solvents and paints															
	Hazardous															
	Inert															
	Non ferrous															
	Oil															
	Textiles															
	Tyres															
	Wood/timber offcuts															
	Food waste															
	Mixed plastic															
Greenwaste				327.20	\$3.21	\$1,050.36								327.20	\$1,050.36	
Totals		993.91	\$4.09	\$4,144.00	351.24	\$3.46	\$1,144.38							1,345.15	\$5,288.38	

Local Government	Material	Kerbside			Vergeside			Dropoff			Resource Recovery			Totals	
		Tonnes of material	Rebate (\$/t)	Rebate (\$)	Tonnes of material	Rebate (\$/t)	Rebate (\$)	Tonnes of material	Rebate (\$/t)	Rebate (\$)	Tonnes of material	Rebate (\$/t)	Rebate (\$)	Tonnes of material	Rebate (\$)
Wanneroo	Aluminium cans	17.76	\$6.19	\$109.96										17.76	\$109.96
	Steel cans	24.78	\$4.72	\$116.84										24.78	\$116.84
	Glass	177.28	\$4.35	\$770.51										177.28	\$770.51
	ONP	536.21	\$5.16	\$2,765.79										536.21	\$2,765.79
	OCC	48.46	\$5.56	\$269.63										48.46	\$269.63
	LPB	0.00	\$5.53	\$0.00											
	PET	26.73	\$5.45	\$145.76										26.73	\$145.76
	HDPE	23.57	\$5.45	\$128.53										23.57	\$128.53
	Batteries	10.86	\$4.42	\$48.00										10.86	\$48.00
	Ferrous metal														
	Solvents and paints														
	Hazardous														
	Inert														
	Non ferrous														
	Oil	8.12	\$4.09	\$33.19										8.12	\$33.19
	Textiles														
	Tyres														
	Wood/timber offcuts														
	Food waste														
	Mixed plastic														
Greenwaste				2,601.05	\$4.39	\$11,428.86	298.67	\$4.24	\$1,267.34					2,899.72	\$12,696.20
Totals		873.77	\$4.99	\$4,388.23	2,601.05	\$4.52	\$11,428.86	298.67	\$4.80	\$1,267.34				3,773.49	\$17,084.43

Local Government	Material	Kerbside			Vergeside			Dropoff			Resource Recovery			Totals	
		Tonnes of material	Rebate (\$/t)	Rebate (\$)	Tonnes of material	Rebate (\$/t)	Rebate (\$)	Tonnes of material	Rebate (\$/t)	Rebate (\$)	Tonnes of material	Rebate (\$/t)	Rebate (\$)	Tonnes of material	Rebate (\$)
Waroona	Aluminium cans	1.60	\$10.75	\$17.21										1.60	\$17.21
	Steel cans	1.49	\$9.28	\$13.82										1.49	\$13.82
	Glass	13.84	\$8.91	\$123.31										13.84	\$123.31
	ONP	84.12	\$9.72	\$817.74										84.12	\$817.74
	OCC	17.26	\$10.13	\$174.79										17.26	\$174.79
	LPB	0.15	\$10.09	\$1.51										0.15	\$1.51
	PET	1.58	\$10.02	\$15.83										1.58	\$15.83
	HDPE	2.13	\$10.02	\$21.33										2.13	\$21.33
	Batteries														
	Ferrous metal							184.00	\$15.38	\$2,830.55				184.00	\$2,830.55
	Solvents and paints														
	Hazardous														
	Inert														
	Non ferrous														
	Oil														
	Textiles														
	Tyres														
	Wood/timber offcuts														
	Food waste														
	Mixed plastic														
Greenwaste															
Totals		122.17	\$9.23	\$1,185.54				184.00	\$14.71	\$2,830.55				306.17	\$4,016.09

Local Government	Material	Kerbside			Vergeside			Dropoff			Resource Recovery			Totals	
		Tonnes of material	Rebate (\$/t)	Rebate (\$)	Tonnes of material	Rebate (\$/t)	Rebate (\$)	Tonnes of material	Rebate (\$/t)	Rebate (\$)	Tonnes of material	Rebate (\$/t)	Rebate (\$)	Tonnes of material	Rebate (\$)
Western Metropolitan Regional Council	Aluminium cans														
	Steel cans														
	Glass														
	ONP														
	OCC														
	LPB														
	PET														
	HDPE														
	Batteries														
	Ferrous metal														
	Solvents and paints														
	Hazardous														
	Inert														
	Non ferrous														
	Oil							2.52	\$2.83	\$7.13				2.52	\$7.13
	Textiles														
	Tyres														
	Wood/timber offcuts														
	Food waste														
	Mixed plastic														
Greenwaste															
Totals							2.52	\$3.68	\$7.13				2.52	\$7.13	

Local Government	Material	Kerbside			Vergeside			Dropoff			Resource Recovery			Totals	
		Tonnes of material	Rebate (\$/t)	Rebate (\$)	Tonnes of material	Rebate (\$/t)	Rebate (\$)	Tonnes of material	Rebate (\$/t)	Rebate (\$)	Tonnes of material	Rebate (\$/t)	Rebate (\$)	Tonnes of material	Rebate (\$)
Wickepin	Aluminium cans														
	Steel cans														
	Glass	12.81	\$9.45	\$121.02										12.81	\$121.02
	ONP	17.05	\$10.26	\$174.92										17.05	\$174.92
	OCC	9.93	\$10.67	\$105.90										9.93	\$105.90
	LPB														
	PET														
	HDPE														
	Batteries														
	Ferrous metal														
	Solvents and paints														
	Hazardous														
	Inert														
	Non ferrous														
	Oil														
	Textiles														
	Tyres														
Wood/timber offcuts															
Food waste															
Mixed plastic	1.51	\$10.55	\$15.94										1.51	\$15.94	
Greenwaste															
Totals		41.30	\$9.73	\$417.78									41.30	\$417.78	

Local Government	Material	Kerbside			Vergeside			Dropoff			Resource Recovery			Totals	
		Tonnes of material	Rebate (\$/t)	Rebate (\$)	Tonnes of material	Rebate (\$/t)	Rebate (\$)	Tonnes of material	Rebate (\$/t)	Rebate (\$)	Tonnes of material	Rebate (\$/t)	Rebate (\$)	Tonnes of material	Rebate (\$)
Wongan-Ballidu	Aluminium cans	0.58	\$11.27	\$6.54										0.58	\$6.54
	Steel cans	0.95	\$9.79	\$9.31										0.95	\$9.31
	Glass	4.57	\$9.43	\$43.08										4.57	\$43.08
	ONP	17.02	\$10.24	\$174.25										17.02	\$174.25
	OCC	4.84	\$10.64	\$51.51										4.84	\$51.51
	LPB	0.55	\$10.61	\$5.83										0.55	\$5.83
	PET	0.72	\$10.53	\$7.58										0.72	\$7.58
	HDPE	0.78	\$10.53	\$8.22										0.78	\$8.22
	Batteries														
	Ferrous metal							33.79	\$15.77	\$532.90				33.79	\$532.90
	Solvents and paints														
	Hazardous														
	Inert														
	Non ferrous														
	Oil														
	Textiles														
	Tyres														
Wood/timber offcuts															
Food waste															
Mixed plastic	0.34	\$10.53	\$3.55										0.34	\$3.55	
Greenwaste															
Totals		30.35	\$10.00	\$309.86			33.79	\$15.08	\$532.90				64.14	\$842.76	

Local Government	Material	Kerbside			Vergeside			Dropoff			Resource Recovery			Totals	
		Tonnes of material	Rebate (\$/t)	Rebate (\$)	Tonnes of material	Rebate (\$/t)	Rebate (\$)	Tonnes of material	Rebate (\$/t)	Rebate (\$)	Tonnes of material	Rebate (\$/t)	Rebate (\$)	Tonnes of material	Rebate (\$)
York	Aluminium cans	1.11	\$10.63	\$11.74				0.16	\$16.23	\$2.61				1.27	\$14.35
	Steel cans	0.78	\$9.15	\$7.09				0.11	\$14.76	\$1.64				0.89	\$8.73
	Glass	10.91	\$8.78	\$95.77				1.59	\$14.39	\$22.86				12.50	\$118.63
	ONP	33.08	\$9.59	\$317.33				4.82	\$15.20	\$73.24				37.90	\$390.57
	OCC	7.39	\$10.00	\$73.90				1.08	\$15.60	\$16.84				8.47	\$90.74
	LPB	0.21	\$9.96	\$2.08				0.03	\$15.57	\$0.53				0.24	\$2.61
	PET	1.11	\$9.89	\$10.94				0.16	\$15.49	\$2.51				1.27	\$13.45
	HDPE	1.29	\$9.89	\$12.78				0.19	\$15.49	\$2.90				1.48	\$15.68
	Batteries							4.25	\$14.46	\$61.46				4.25	\$61.46
	Ferrous metal														
	Solvents and paints														
	Hazardous														
	Inert														
	Non ferrous														
	Oil							1.91	\$14.13	\$27.03				1.91	\$27.03
	Textiles														
	Tyres														
Wood/timber offcuts															
Food waste															
Mixed plastic															
Greenwaste															
Totals		55.87	\$9.11	\$531.63			14.31	\$14.47	\$211.62				70.18	\$743.25	

SCHEDULE 5

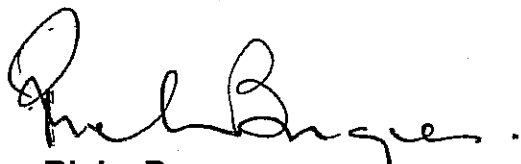
CONFIRMATION OF DUE ADMINISTRATION PROCESS

1. I hereby certify that the administration of the Resource Recovery Rebate Scheme for 1 January 2006 to 30 June 2006 undertaken by the Municipal Waste Advisory Council has been completed in accordance with the criteria laid down in the Memorandum of Understanding on the Resource Recovery Rebate Scheme and offer this report as evidence of same.

Signed on behalf of the Western Australian Local Government Association

on the 21st day of November 2006

by



Ricky Burges
Chief Executive Officer

APPENDIX 1

RESOURCE RECOVERY REBATE SCHEME PERIOD 16 ADMINISTRATION PROCEDURE

RESOURCE RECOVERY REBATE SCHEME PERIOD 16 ADMINISTRATION PROCEDURE

Introduction

Eligible tonnes are determined by checking the tonnes claimed against supporting documentation provided on and attached to each approved application form. In order to receive a rebate, local governments must demonstrate in their applications that all material complies with the following four principles:

1. All material awarded is supported by appropriate documentation.
2. All material is from a domestic source.
3. All the material has been recycled, reused or recovered outside the void space of a landfill cell.
4. All material must have been collected from a service provided by or on behalf of the local government claiming the material.

The sequential stages of the assessment are outlined below.

1. Definitions

- 1.1 Dry recyclables** – Any recyclable material excluding Greenwaste.
- 1.2 Greenwaste** – All plant/garden material collected through either a bulk verge, drop off point or kerbside containerised system.
- 1.3 Approved Greenwaste Processor** – Changes were implemented during period 10, whereby the “approved Greenwaste processor” receipts were no longer considered sufficient documentation to support the reuse of the Greenwaste. To make the system more equitable, re-use documentation was requested from Greenwaste processors.

2. Receiving applications

- 2.1** Application forms are sent to the Waste Management Board (c/- the Department of the Environment).
- 2.2** An Officer at the Department of the Environment forwards all applications received to the Municipal Waste Advisory Council immediately after the closing date.
- 2.3** Municipal Waste Advisory Council staff record the date received (taken from the Department of the Environment date stamp) and the total tonnes claimed on the assessment form.
- 2.4** Each application is checked to ensure that the application was dispatched before the closing date in compliance with the lodgement form instructions (see application pack lodgement instructions).
- 2.5** Late applicants are contacted immediately to advise that application has been received after closing date and request independent verification of lodgement date. The independent verification of lodgement date is attached to the application. If they cannot provide independent verification of lodgement, the application is considered ineligible.

3. Assessing Applications

3.1 Section A1 Kerbside Containerised Recycling Collections

- 3.1.1 Each material claimed is cross matched to the supporting documentation.
- 3.1.2 Supporting documentation must consist of clearly identifiable third party processor receipts or third party weighbridge documents showing:
 - the material type;
 - tonnes received;
 - the date the material was received or a range of dates between which material was received; and
 - The local government the material was received from.Local government spreadsheets or handwritten receipts without the processors logo are not acceptable.
- 3.1.3 In some instances, data may be requested directly from the processor to verify claims.
- 3.1.4 If supporting documents are missing or insufficient the local government is contacted by telephone and fax and asked to provide the appropriate documentation (see section 4 provision of information).
- 3.1.5 All ineligible material is deducted from the claim.
- 3.1.6 Applicants can not be awarded more than they claim on the application but they can be awarded less. If a local government claims for more than it can document, only the amount that can be documented will be awarded. If a local government claims for less than it provides documentation for, the local government claim figure will be accepted.

3.2 Section A3 Bulk Refuse Collections

- 3.2.1 The material claimed is verified against the supporting documentation as described above in section 3.1.
- 3.2.2 Only materials that have been collected through a service that is delivered by, or on behalf of and funded by an eligible local government will be eligible for rebate. If it is not abundantly clear that the local government is actively involved in the provision of a recycling service (i.e. when community groups carry out the service), the local government will be asked to provide evidence that it contributes to the service. This will generally consist of evidence showing a financial contribution to the organisation eg. provision of infrastructure, reduced rent or advertising.
- 3.2.3 If car batteries, car bodies or oil are collected and a tonnage can not be supplied for these materials the following conversion factors are applied.
 - Oil – 1litre = 0.9kg
 - Car Bodies – 1 car body = 300kg
 - Car batteries – 1 car battery = 12.5kg
 - 44 Gallon drums – 1 drum =21kg

3.3 Section A4 Drop Off Point

- 3.3.1 The material claimed is verified against the supporting documentation as described above in section 3.1
- 3.3.2 Sections 3.2.2 and 3.2.3 are applied to all drop off point material.
- 3.3.3 If an estimate of commercial content of the material has not been provided the local government is contacted and asked to provide an estimate of the commercial content and the method by which they calculated this estimate. If commercial material is not accepted local governments must provide a statement that this is the case. If an estimate of commercial content can not be supplied 25% is deducted from the awarded amount.

- 3.3.4 Salvage material that is sold through an on site shop can only be awarded if records showing sale of the material or weighbridge documentation clearly showing movement of the material out of the facility can be included in the claim.
- 3.3.5 Each metropolitan drop off centre may be subject to a site visit to verify the commercial content (see section 5 Site visit procedure).

Material from the Previous Application Period

- 3.3.6 Material which was processed in another application Period can potentially be awarded if it meets the following criteria:

- a. From a drop off point;
- b. From the previous application period only; and
- c. Was not claimed in the previous application period due to lack of provision of documentation by third party processor.

Other matters which must be considered when awarding material include:

- a. The previous application by the Local Government should be examined to ensure the material has not been claimed previously; and
- b. Proof that the documentation was provided to the Local Government after the closing date for submission to the previous application period should be supplied. This proof can be in the form of a date stamp on the documentation or letter from the CEO indicating when the documentation was received.

3.4 Section A5 Resource Recovery

The following procedures refer to the City of Stirling/Atlas and Southern Metropolitan Regional Council Resource Recovery plants. As further Resource Recovery plants are commissioned procedures will be determined for the different technologies.

City of Stirling/Atlas

- 3.4.1 Non-organic recyclables recovered through Resource Recovery are verified against supporting documentation as described in section 3.1.
- 3.4.2 To verify a claim for organics recovered through Resource Recovery the local government must provide the following information;

Supporting documentation used to verify total collected eligible tonnes

- a. The total “dry” (before water is added) weight of material. (supported by weighbridge documents).
- b. An audited or metered amount of water added to the material.
- c. Tonnes of wet bales and rejects (supported by weighbridge documents).
- d. A recent audit of its waste stream.
- e. A recent bale audit of rejects sent to landfill.

- 3.4.3 The maximum amount of collected material eligible for rebate is calculated using a procedure that follows the eligible material through the Atlas Process. This procedure is outlined below and in Figure 1; The following terms are used in the explanation of the procedure;

Dry Collected Mix – The collected municipal waste delivered to the Atlas plant.

Compostable Organics – The compostable fraction of the municipal waste.

Wet Compostable Organics – Compostable Organics plus the proportion of added water.

Unrecoverable Material – Material other than Compostable Organics and Dry Recovered Recyclables.

Wet Unrecoverable Material – Unrecoverable Material plus the proportion of added water.

Dry Recovered Recyclables – dry recyclables recovered through the Atlas Process and supported by processor receipts.

Wet Collected Mix - The Dry Collected mix plus added water.

Wet Net Mix – The Wet Collected Mix less dry recovered recyclables.

Wet Bales Rejects – Bales containing the mixture of organics, added water, and unrecoverable material unable to be separated by the Atlas process and sent to Landfill.

Wet Material for Composting – The mixture of organics, unrecoverable material and added water sent to the Atlas Farm for composting.

STEP A – The tonnes of Dry Collected Mix are separated into Organic Compostables and Non-Recoverable Material using the waste stream audit. The percentage of dry recyclables removed during the Atlas process is calculated using the processor receipts for the dry recyclables.

STEP B – Water is added to the Dry Collected Mix to give the Wet Collected Mix. It is assumed that the water is carried equally by all components of the waste stream.

STEP C – Dry recyclables are removed from the Wet Collected Mix to give the Wet Net Mix. It is assumed that no water is removed with these recyclables. The tonnes of wet compostable organics are calculated.

STEP D – The percentage of added water in the Wet Net Mix is calculated.

STEP E – After the Wet Net Mix is sent through the Atlas process it is divided into material sent to landfill in the Wet Bales Rejects and material sent to the Atlas farm for Composting.

Both the Wet Bales Rejects and the Wet Material for Composting contain organics, non-recoverable material and added water.

The eligible tonnes consist of the organics in the Wet Material for Composting. This value is calculated using the following formula;

Eligible tonnes = Total Wet Compostable Organics (Step C) - Wet Compostable Organics in Wet Bales Rejects – Added water in Wet Compostable Organics for Composting

Each of these components are calculated as shown in Figure 1 using the Wet Reject Bale audit and the assumption that the proportion of added water in the organic and non-recoverable portions is equal.

Southern Metropolitan Regional Council

3.4.4 Non-organic recyclables recovered through Resource Recovery are verified against supporting documentation as described in section 3.1.

3.4.5 To verify a claim for organics recovered through Resource Recovery the local government must provide the following information;

Supporting documentation used to verify total collected eligible tonnes

- a. The total “dry” (before water is added) weight of material (supported by weighbridge documents).
- b. An audited or metered amount of water added to the material.
- c. Tonnes of material to landfill (supported by weighbridge documents).
- d. A recent audit of its waste stream (currently based on averages of three metropolitan local governments).
- e. A recent audit of rejects sent to landfill (proportions of material are currently assumed from comparable data).

3.4.6 The maximum amount of collected material eligible for rebate is calculated using a procedure that follows the eligible material through the SMRC Process. This procedure is outlined below and in Figure 2. The following terms are used in the explanation of the procedure;

Dry Collected Mix – The collected municipal waste delivered to the SMRC plant.

Compostable Organics – The compostable fraction of the municipal waste.

Wet Compostable Organics – Compostable Organics plus the proportion of added water.

Unrecoverable Material – Material other than Compostable Organics and Dry Recovered Recyclables.

Wet Unrecoverable Material – Unrecoverable Material plus the proportion of added water.

Dry Recovered Recyclables – Dry recyclables recovered through the SMRC process and supported by processor receipts.

Wet Collected Mix – The Dry Collected Mix plus added water.

Wet Net Mix – The Wet Collected Mix less dry recovered recyclables.

Wet Bales Rejects – Waste to landfill containing the mixture of organics, added water, and unrecoverable material unable to be separated by the SMRC Process and sent to Landfill.

Wet Material for Composting – The mixture of organics, unrecoverable material and added water collected from the SMRC digesters for composting.

STEP A – The tonnes of Dry Collected Mix are separated into Organic Compostables and Non-Recoverable Material using the waste stream audit. The percentage of dry recyclables removed during the SMRC process is calculated using the processor receipts for the dry recyclables. The weights of wood/timber off cuts are provided on weighbridge documentation. The wood/timber off cuts and dry recyclables are then removed from the Dry Collected Mix.

STEP B – Water is added to the Dry Collected Mix to give the Wet Collected Mix. It is assumed that the water is carried equally by all components of the waste stream.

STEP C – The tonnes of wet compostable organics are calculated. The percentage of added water in the Wet Net Mix is calculated.

STEP D – After the Wet Net Mix is sent through the SMRC process it is divided into material sent to landfill and material sent for Composting.

Both the material sent to landfill and the Wet Material for Composting contains organics, non-recoverable material and added water.

The eligible tonnes consist of the organics in the Wet Material for Composting. This value is calculated using the following formula;

Eligible tonnes = Total Wet Compostable Organics (Step C) - Wet Compostable Organics in Wet Bales Rejects – Added water in Wet Compostable Organics for Composting

Each of these components are calculated as shown in Figure 2, using the Wet Reject Bale audit and the assumption that the proportion of added water in the organic and non-recoverable portions is equal.

Resource Recovery Reuse Information

3.4.7 Once the total eligible collected tonnes have been calculated the organisation must provide documentation supporting the amount reused. This documentation can consist of:

Supporting documentation required to verify total eligible tonnes reused.

- a. Weighbridge records clearly showing tonnes of material reused.
- b. Receipts from the company reusing the material.
- c. A running summary of truckloads reused the volume of each truck and density of composted material.

- 3.4.8 The tonnes of organic material reused are separated into the component compostable materials and non-recoverable materials using the audit of the waste stream.
- 3.4.9 The Compostable Organics are broken down into the component organics (eg newspaper, food waste etc.) and tonnes awarded to each component.

Compost loses volume and weight over the composting process. If the local government wishes to receive a rebate on the total amount of organic material collected the local government must ensure that they can demonstrate the ratio of the volume (or weight) of composted to uncomposted material. For example if the final composted product is 0.5 cubic metres to 1 cubic metre of non-composted material. For every 0.5 cubic metres shown as reused the local government will be eligible to be rebated on 1 cubic metre of compost. In order to be eligible to receive a rebate on the original eligible tonnes the local government must provide the documentation in the procedure outlined below.

- 3.4.10 The local government must conduct a study of the reduction in volume of the material from its delivery to the composting site until maturation to develop a ratio between uncomposted and composted material.
- 3.4.11 The local government must carry out tests to show the density of material before and after composting in order to convert the volume shown as reused to tonnes.
- 3.4.12 The ratio calculated in the section above is applied to the tonnes shown as reused.
- 3.4.13 The tonnes of material rebated can only be equal to or less than the original collected eligible tonnes as calculated.
- 3.4.14 The resource recovery plant may be subject to a site visit to ensure the process complies with the schemes objectives (See section 5 site visit procedure).

3.5 Section A6 Greenwaste

- 3.5.1 To be eligible for a rebate a Greenwaste claim must be supported by documentation showing collection and reuse.
- 3.5.2 Documentation supporting collection can consist of:
 - a. Weighbridge documents clearly showing that the material collected is Greenwaste and the range of dates between which the material was collected. If there is any ambiguity in the weighbridge codes with regards to the source of the Greenwaste, local governments are asked for documentation or a statement that all material is from a domestic source.
 - b. Running summaries of trailer or bulk verge collections clearly showing the number of trailers or truck loads, dates of collection and the volume used for each load.
 - c. A survey of the mulch pile collected during the period before and reuse and which clearly shows the dates of the survey.
- 3.5.3 Documentation supporting reuse can consist of:
 - a. Receipts from a processor (see definitions section 1) clearly showing Greenwaste has been processed and removed from the site and the dates this occurred.
 - b. Weighbridge documents clearly showing Greenwaste moving out of a facility. If there is any ambiguity in the weighbridge codes with regards to the source of the material, local governments are asked for documentation or a statement that all material is from a domestic source.
 - c. A survey of the mulch pile after reuse has occurred clearly showing the date the stockpile was surveyed and the volume.
 - d. A running summary of trailers removing mulch from a facility clearly showing the dates and volume removed.
 - e. Documentation showing use of the material through rehabilitation within the landfill boundaries (but not within the landfill cell)
- 3.5.4 The Greenwaste claimed must be supported by the appropriate correctly completed Greenwaste processing certificate (Form 1 or Form 2).
- 3.5.5 The supporting documentation for Greenwaste may be in tonnes or volume but the rebate is only awarded per tonne. The following factors are used to convert Greenwaste volume to tonnes;
 - a. processed Greenwaste volume = 1 cubic metre:0.3 tonne

- b. Unprocessed Greenwaste volume = 1 cubic metre:0.15 tonne
 - c. Unprocessed Greenwaste compactor trucks volume = 1 cubic metre:0.26 tonne
 - d. Unprocessed 1.8 x 1.2 metre trailer : 0.15 tonnes
 - e. Processed 1.8 x 1.2 metre trailer : 0.3 tonnes
- 3.5.6 All metropolitan local governments who manage a stockpile of Greenwaste from either bulk verge or drop off collections were subject to a site visit in order to verify the above information (see section 5 Site visit procedure).

4. Provision of Information

- 4.1 Local governments must provide documentation supporting the material claimed as outlined in Section 3.1 above. If this information is not provided the local government is contacted by fax requesting the information by a certain date. The local governments will be contacted again if the information is not provided before the due date set on the fax. A final date for all local governments is set for the provision of information and after this time further supporting documentation is not accepted. If the local governments have not provided information which is not essential to the calculation of the rebate the local government is not contacted to provide this information.
- 4.2 All local governments not providing supporting documentation before the final due date are listed in the Agenda for the Resource Recovery Rebate Scheme Working Group meeting. The Resource Recovery Rebate Scheme Working Group may consider awarding a local government this material if extenuating circumstances exist.

5. Site Visits

- 5.1 Metropolitan site visits will only be conducted where the Resource Recovery Rebate Scheme Working Group considers the visit necessary and in response to the following conditions;
- No previous site visit has been conducted.
 - The site operations have changed significantly since the previous site visit.
 - A particular issue requires a site visit to resolve the issue.
- 5.2 Site Visits need only be carried out if a local government changes its operations or if a particular problem is identified.
- 5.3 Site visits may be conducted independently of the assessment of a particular period.
- 5.4 The facilities are inspected for any evidence of commercial material and to ensure that the material has been reused, recycled or recovered. The nature and amount of the material is observed and checked against the claim and documentation provided in the application forms. The following questions are used as a guide in assessing the facilities. The questions are answered using information from the application and it is assessed during the site visit whether the information provided in the application is reasonable.
- 5.4.1 Commercial Content (drop off point recyclables and Greenwaste).
- a. Is commercial material accepted?
 - b. Is material separated?
 - c. Are separate receipts provided for the commercial and domestic stockpiles?
 - d. How is commercial content deducted?
 - e. Is the type of material clearly stated on the documentation?
 - f. Is the vehicle survey by mass or by number?
 - g. Do the answers to the above questions appear to be reasonable from observations on the day? If not can they explain this?
- 5.4.2 Greenwaste- reused/recycled/recovered;
- a. Is the material reused by a processor or processed or removed by local government/residents?
 - b. How often is green waste processed and removed?
 - c. How much Greenwaste is generally removed by the processor?
 - d. Is all green waste processed and removed with each processor visit?
 - e. Is a stockpile present? Estimate the volume. Is the volume larger than would be expected given the above factors? Is there a reason for this?

- f. How is mulch stockpiled for residents? eg. Amount left on site by processors for use by residents, stockpile is mulched and left for resident at irregular intervals
 - g. How is the amount removed by residents estimated? (*Weighbridge, running summary, visual estimate, volumetric survey*).
 - h. On average, how much does the stockpile contain at any one time?
 - i. At approximately what rate do residents remove mulch?
 - j. Is all mulch removed before a new stockpile is made?
 - k. Where did local government reuse the material? If on site rehabilitation. Where is it?
 - l. Has the mulch been used within the landfill cell?
 - m. Has mulch used for on-site rehabilitation been applied in excess for rehabilitation i.e. greater than 4 inches?
 - n. Does the area of rehabilitation roughly correspond with the volume claimed?
 - o. How is contamination removed and the weight deducted from the amount claimed?
 - p. Is the Greenwaste composted onsite (rather than mulched) or stockpiled for long periods of time before use.
 - q. Can a correlation between the amount collected and the amount of compost reused be calculated?
- 5.5** Photos are taken as a record of the visits and compiled along with written observations of the site as a site visit report (it must be noted that the site visits are undertaken some months after the end of the period and therefore the operation of the facilities may have changed in this time).

6. Resource Recovery Rebate Scheme Working Group

- 6.1** The Resource Recovery Rebate Scheme Working Group holds a number of meetings to consider issues arising from the assessment of the applications.
- 6.2** The Resource Recovery Rebate Scheme Working Group considers the following figures.
- a. Rebate Summary,
 - b. Tonnage Summary,
 - c. A Individual Local Government Summary of tonnes awarded from various sources and the rebate amount,
 - d. Key Performance Indicators (KPI's) for Kerbside Collection Services.(KPI's for all services are included although only reviewed on request) KPI's include; Total Tonnes awarded, Total rebate, Average rebate per tonne, Yield (kg/hh/week) and System Cost (\$/tonne)
- 6.3** Local governments who have demonstrated an increase or decrease in tonnes collected of kerbside containerised recycling collections greater than one standard deviation from the previous period are considered. Local governments with a particularly high yield or system cost are considered. If reasons for unusual numbers can not be provided the Resource Recovery Rebate Scheme Working Group requests that these local governments are investigated to ensure commercial material has been considered in the claim.
- 6.4** The Resource Recovery Rebate Scheme Working Group will consider all late applications and recommend if the applications should be accepted.
- 6.5** Requests for special considerations from local governments are considered against the policies of the scheme.
- 6.6** Issues arising from the assessment of the applications which do not fall within the current policies are considered.
- 6.7** Applications for approved Greenwaste processor status are no longer relevant after Period 10.
- 6.8** Material from local governments who have not provided supporting documentation before the final due date are considered.

7. Rebate Calculation

7.1 Data Entry

- 7.1.1 The eligible tonnes for each local government are entered into the software designed to calculate the rebate.

7.1.2 The rebate is calculated on the factors below. These factors allow the calculation of a final modifying score which is applied to the eligible tonnes to calculate the final rebate:

Considers	Percentage	Factors
1. Material Type	40%	Resource Value 95%
		Environmental Risk 5%

Considers	Percentage	Factors
2. Regional Characteristics	40%	Distance from Perth 67%
		Density of collection area 33%

Considers	Percentage	Factors	Weightings
3. Collection System	20%	Environment 25%	Greenhouse Gas Potential 100%
		Social 25%	Ease of Use - Collection frequency 44%
			Ease of Use - Collection method 22%
			Ease of Use - Overall Program 22%
			Visual impact 11%
		Economic 50%	Yield 67%
			Cost per kg 33%

Total 100%

7.2 Greenwaste / Organic Waste Collection Accrual

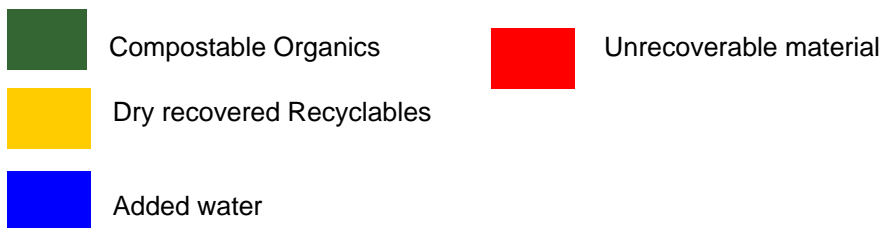
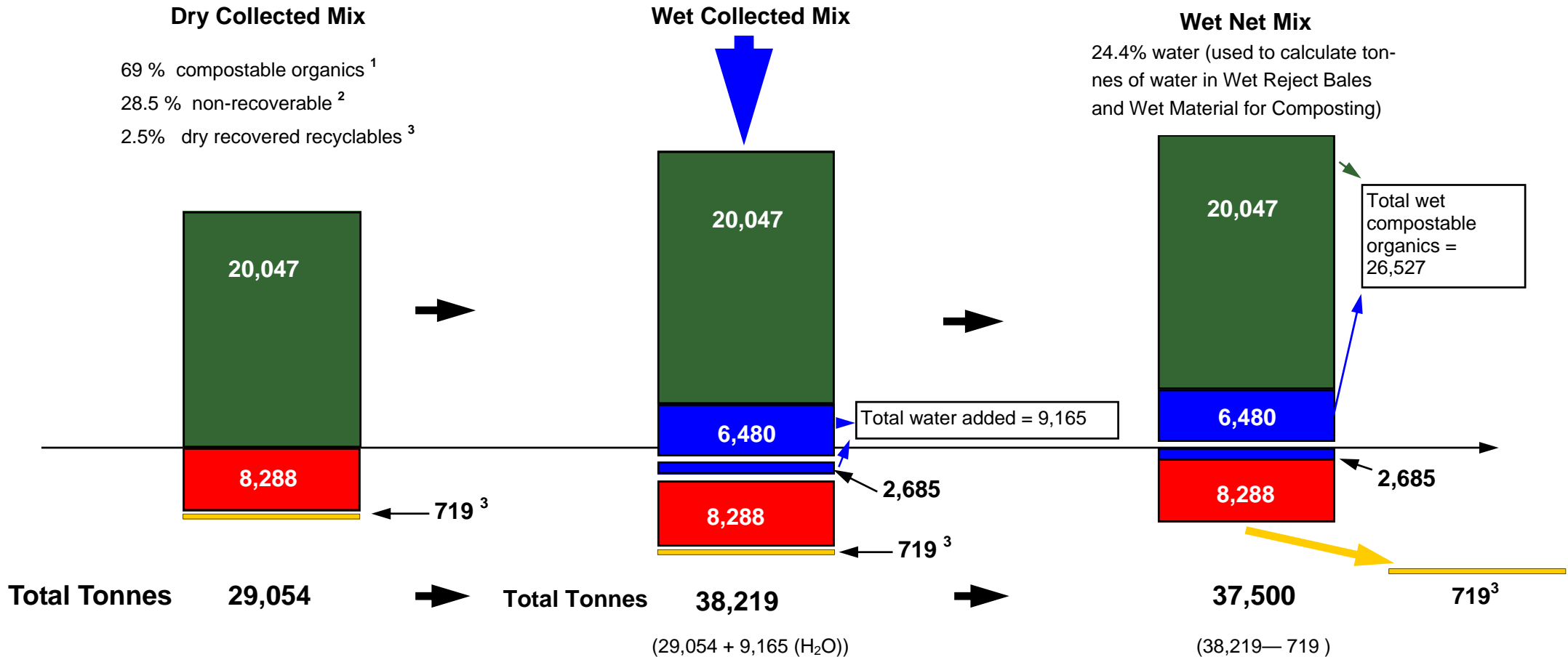
- 7.2.1 If a Local Government collects more Greenwaste / Organic waste in a Period than they reuse, that Local Government may be eligible to claim that Greenwaste in a later period.
- 7.2.2 A record of Greenwaste / Organic waste collection accruals claimed and subsequently awarded is kept as part of the rebate calculation database.
- 7.2.3 The Greenwaste / Organic waste collection accrual will remain valid for the purposes of calculating rebates in the system for a maximum of three (3) Periods after the Period in which the material was collected.

Figure 1. Calculation of the Stirling rebate Period 16

Step A-Tonnes of Dry Collected Mix is characterised using the waste stream audit ¹

Step B-Water is added to the tonnes of the Dry Collected Mix ⁴

Step C-Dry Recovered Recyclables are removed from the Wet Collected Mix. The percentage of added water is calculated.



¹ City of Stirling, Community Residential Waste Survey, Murdoch University November 2005

² % of non-compostable material less dry recovered recyclables ³

³ from processor receipts

Assumptions

⁴ No added water is removed with the dry recyclables

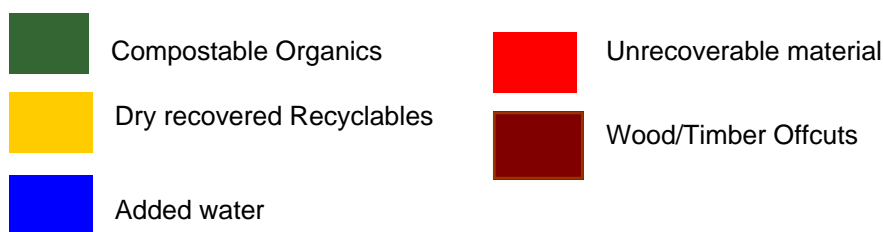
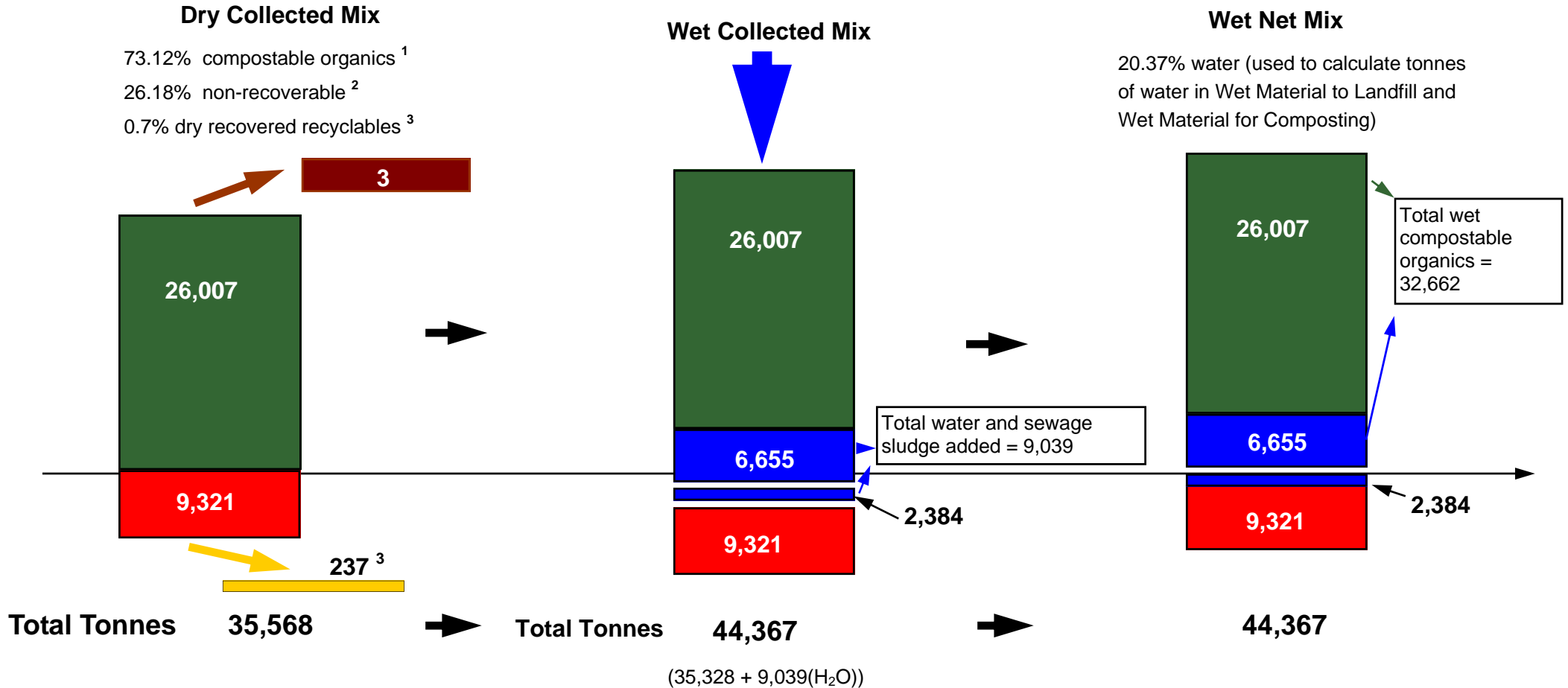
⁵ The proportion of added water is equal in the compostable organics and unrecoverable material ie. 24.4%.

Figure 2. Calculation of the Southern Metropolitan Regional Council rebate Period 16

Step A-Tonnes of Dry Collected Mix is characterised using the waste stream audit ¹

Step B-Water and sewage sludge added to the Dry Collected Mix

Step C- The percentage of added water and sewage sludge is calculated.



¹ City of Canning, City of Melville (2003 & 2005) and City of East Fremantle waste audits (weighted average)

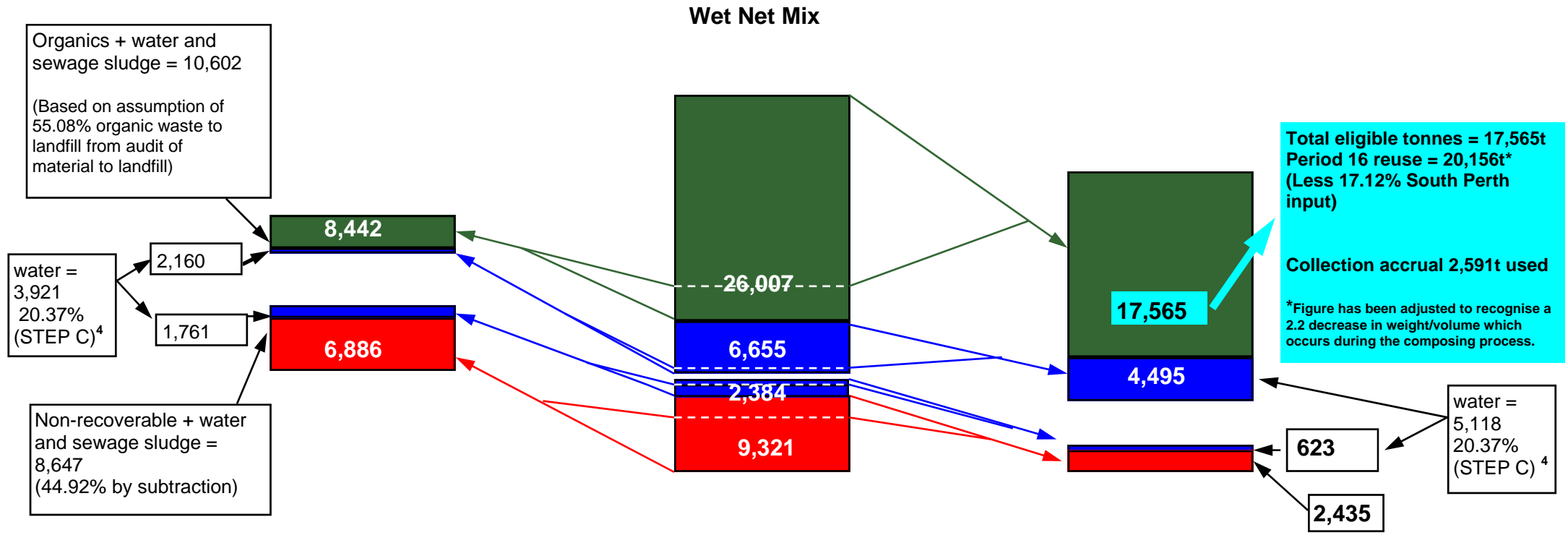
² % of non-compostable material less dry recovered recyclables

³ from processor receipts

Assumptions

⁴ The proportion of added water and sewage sludge is equal in the compostable organics and unrecoverable material ie. 20.37%.

Step D—The Wet Net Mix is separated into Wet Bales Rejects and Wet Organics for Composting.



⁴Wet material to landfill = 19,249
(from weighbridge receipts)

44,367

⁴Wet Material for composting = 25,118
(remainder)
(44,367—19,249)

TO LANDFILL

TO COMPOSTING